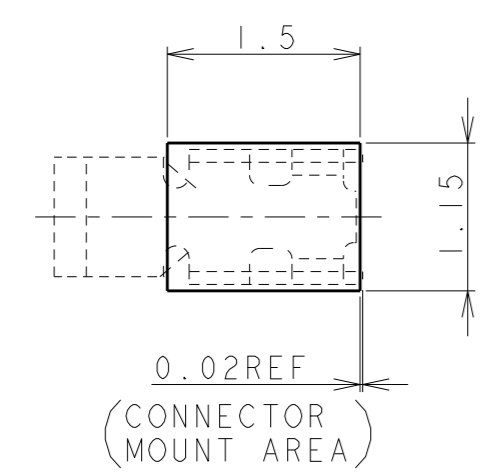
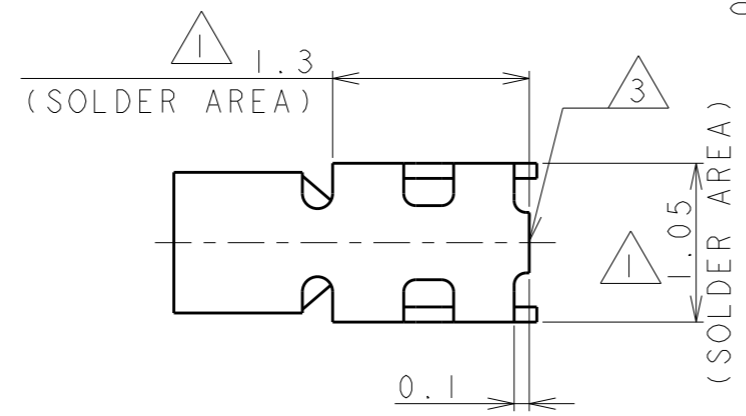
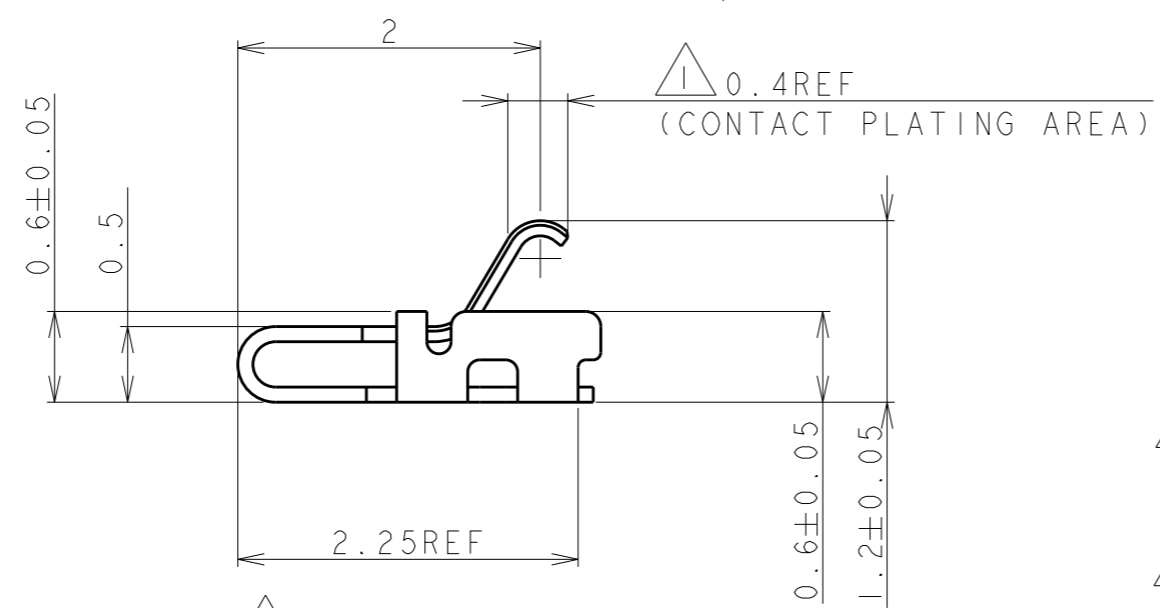
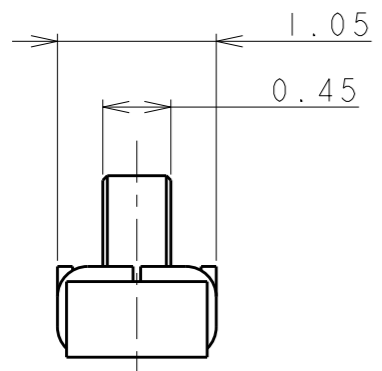
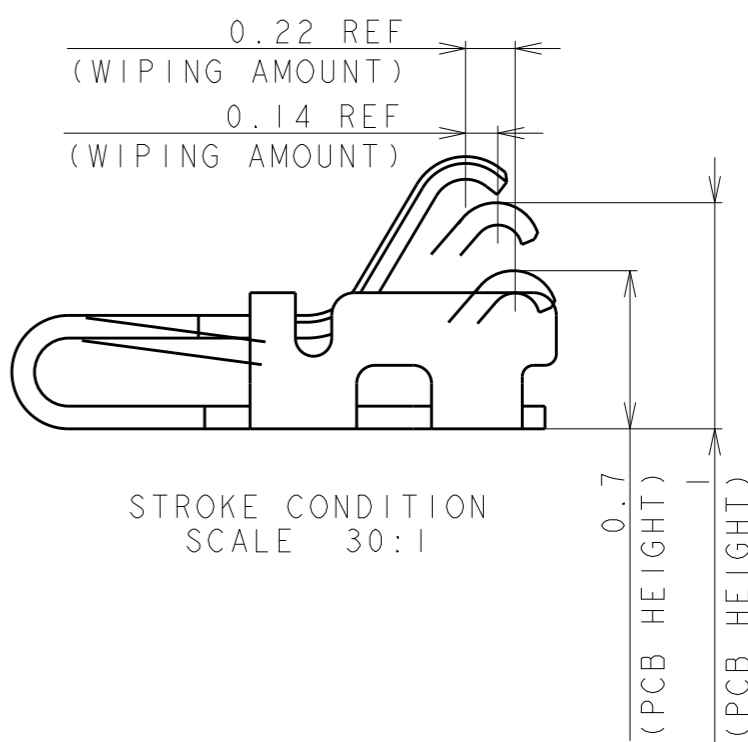
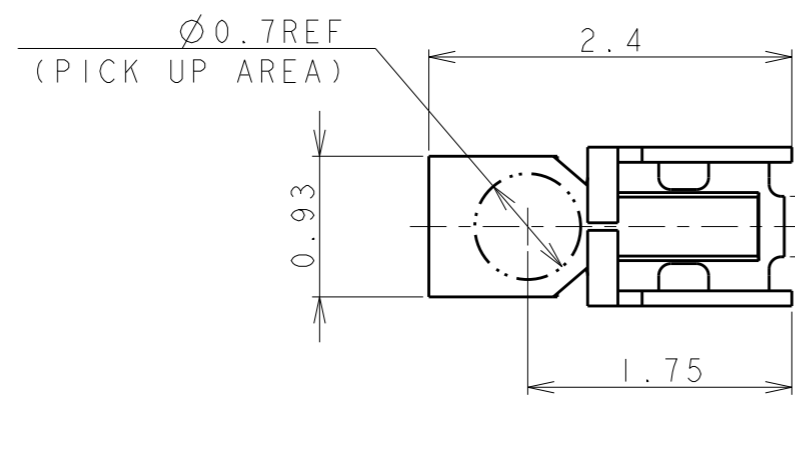


THIS DRAWING IS UNPUBLISHED. RELEASED FOR PUBLICATION 20  
 © COPYRIGHT 20 BY - ALL RIGHTS RESERVED.

LOC	DIST	REVISIONS			
P	LTR	DESCRIPTION	DATE	DWN	APVD
J		A	REVISED	01JUL2010	Y.K Y.N
		B	REVISED PER ECR-12-020867	24JAN2013	F.L S.Y
		BI	REVISED PER ECR-13-008919	03JUN2013	R.W S.Y

AS SHOWN: - 1 & - 3



NOTES:

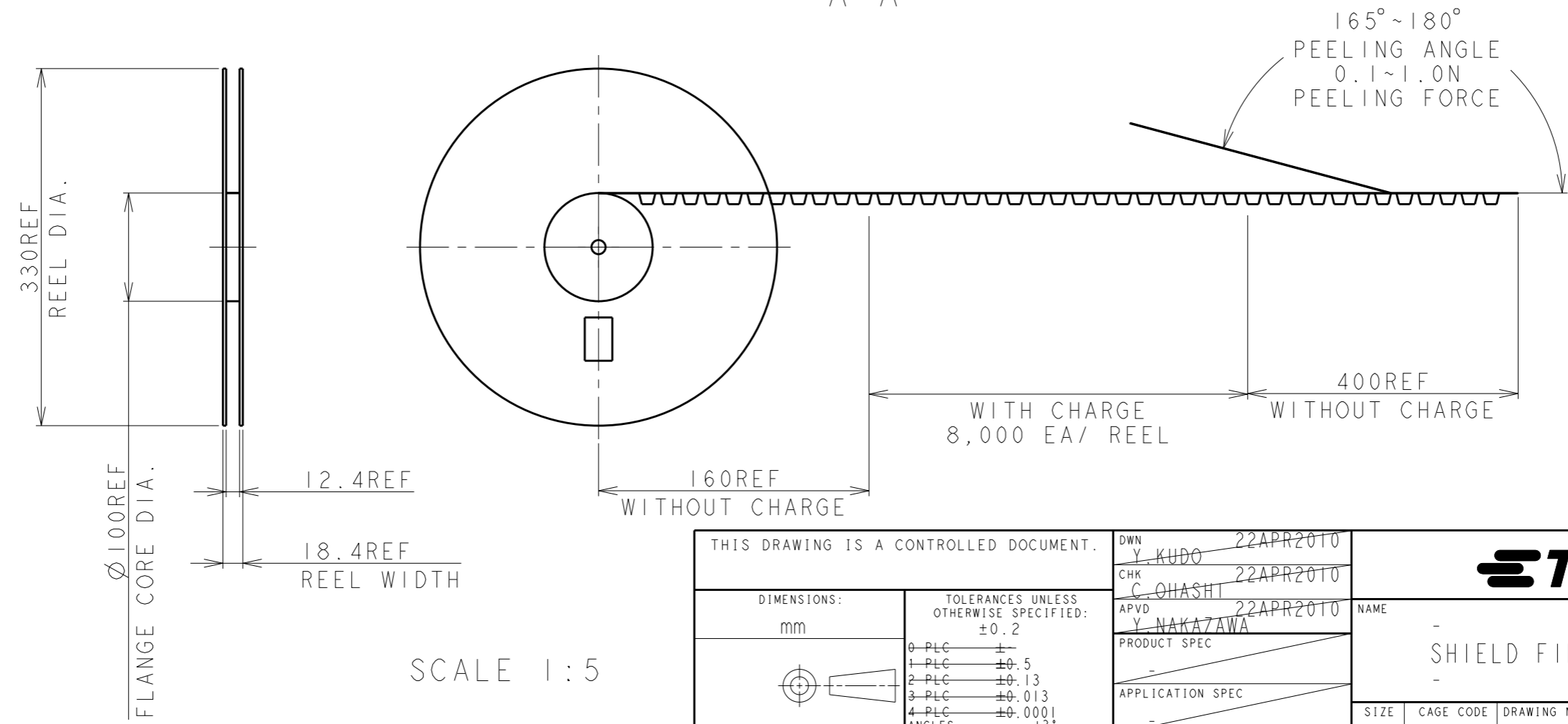
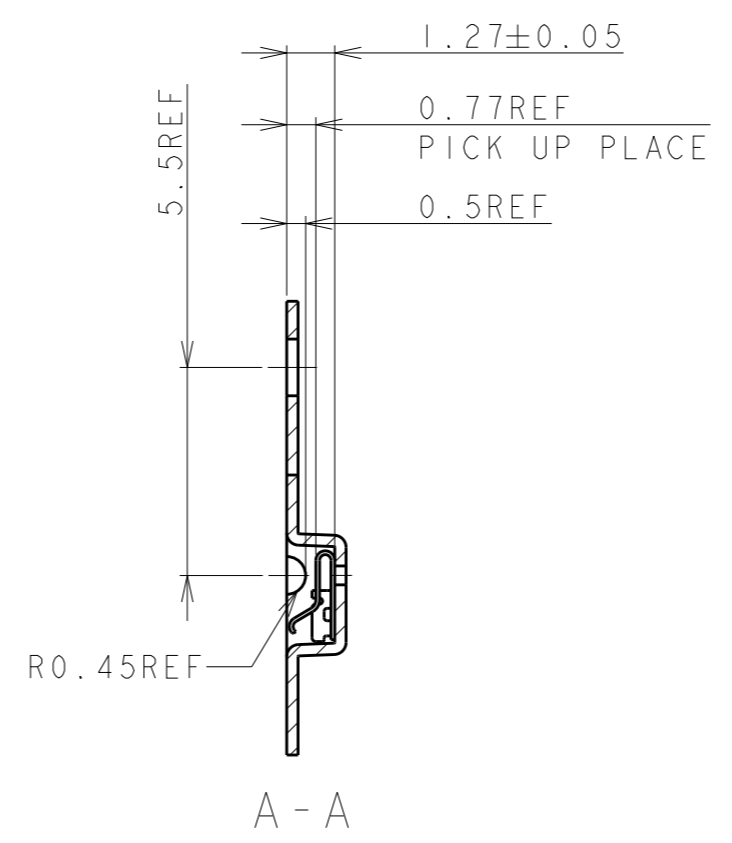
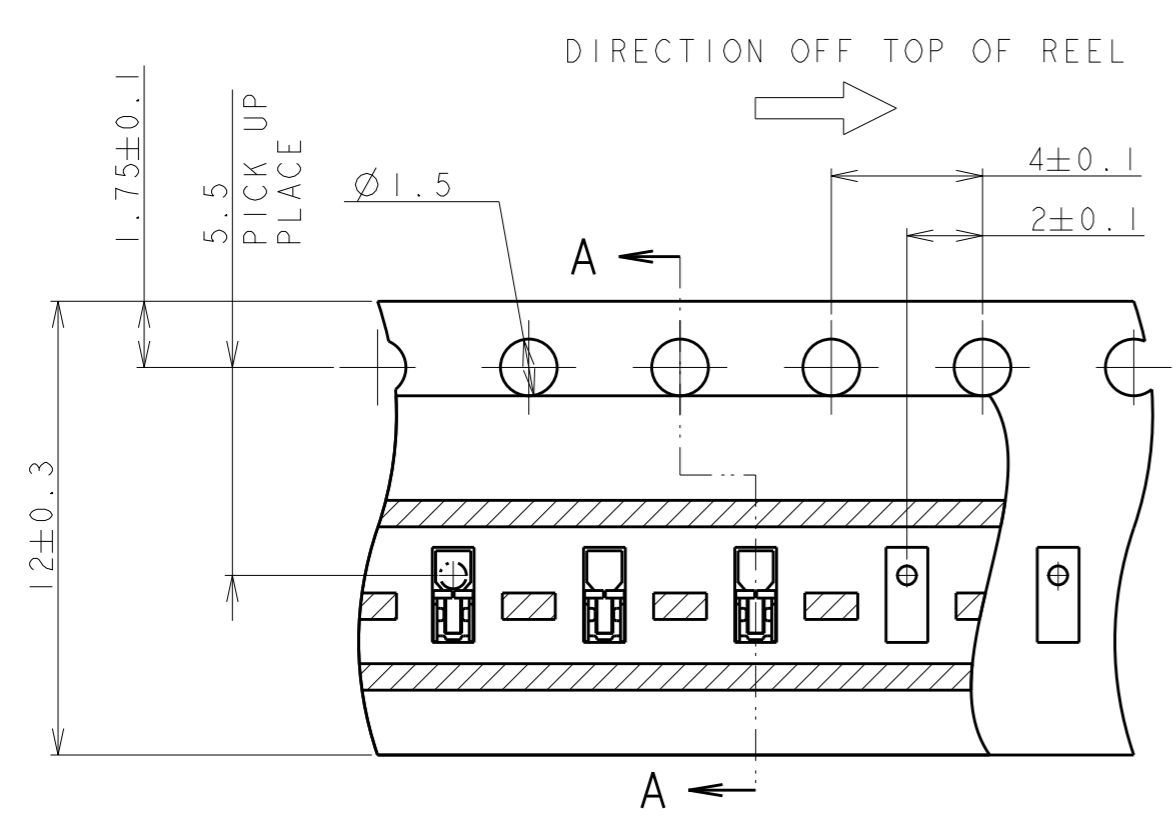
- △ FINISH (PLATING SPECIFICATION)  
 Ni UNDER PLATING : 0.0008mm TO 0.002mm  
 Au PLATING (CONTACT PLATING AREA) : 0.00025mm TO 0.0005mm  
 Au PLATING (SOLDER AREA) : 0.00005mm TO 0.0005mm
- △ MATERIAL : COPPER ALLOY, THK.=0.1mm
- △ CUTTING BURR : 0.05mm MAX.
- 4 DISUSED PACKAGEING MATERIAL : DRYPACK AND BAKING PROCESS.
- △ POST-PLATING SPECIFICATION:  
 Ni UNDER PLATING:0.8um TO 2.0um  
 Au PLATING(CONTACT PLATING):0.3um MIN  
 Au PLATING(SOLDER PLATING):0.01um TO 0.2um
- 6 NORMAL FORCE AT 1.0mm HEIGHT IS 0.3N MIN  
 NORMAL FORCE AT 0.7mm HEIGHT IS 1.1N MAX

△	△	2134078-3
△	△	2134078-1
FINISH	MATERIAL	PART NUMBER


THIS DRAWING IS A CONTROLLED DOCUMENT.		DWN Y.KUDO 22APR2010	TE Connectivity	
DIMENSIONS: mm		CHK C.OHASHI 22APR2010		
TOLERANCES UNLESS OTHERWISE SPECIFIED: ±0.15		APVD Y.NAKAZAWA 22APR2010	NAME - SHIELD FINGER 1210	
0 PLC ± 1 PLC ±0.5 2 PLC ±0.13 3 PLC ±0.013 4 PLC ±0.0001 ANGLES ±3°		PRODUCT SPEC -	SIZE A3 CAGE CODE 00779 C=2134078	
MATERIAL △2		APPLICATION SPEC -	RESTRICTED TO -	
FINISH △1		WEIGHT 4.4 mg	SCALE 20:1 SHEET 1 OF 2 REV BI	
Customer Drawing				

THIS DRAWING IS UNPUBLISHED. RELEASED FOR PUBLICATION 20  
 © COPYRIGHT 20 BY - ALL RIGHTS RESERVED.

LOC	DIST	REVISIONS			
P	LTR	DESCRIPTION	DATE	DWN	APVD
		SEE SHEET 1	-	-	-



SCALE 1:5

THIS DRAWING IS A CONTROLLED DOCUMENT.		DWN Y. KUDO 22APR2010	 TE Connectivity	
DIMENSIONS: mm		CHK C. OHASHI 22APR2010		
TOLERANCES UNLESS OTHERWISE SPECIFIED: $\pm 0.2$		APVD Y. NAKAZAWA 22APR2010	NAME - SHIELD FINGER 1210	
0 PLC $\pm$ 1 PLC $\pm 0.5$ 2 PLC $\pm 0.13$ 3 PLC $\pm 0.013$ 4 PLC $\pm 0.0001$ ANGLES $\pm 3^\circ$		PRODUCT SPEC -	RESTRICTED TO	
MATERIAL -		FINISH -	APPLICATION SPEC -	SIZE A300779
		WEIGHT 4.4 mg	DRAWING NO C-2134078	
		Customer Drawing	SCALE 20:1	SHEET 2 OF 2