

MATERIALS AND FINISHES

BODY, CAP: ZINC ALLOY  
PLATED NICKEL

CENTER CONTACT: PHOSPHOR BRONZE  
PLATED GOLD

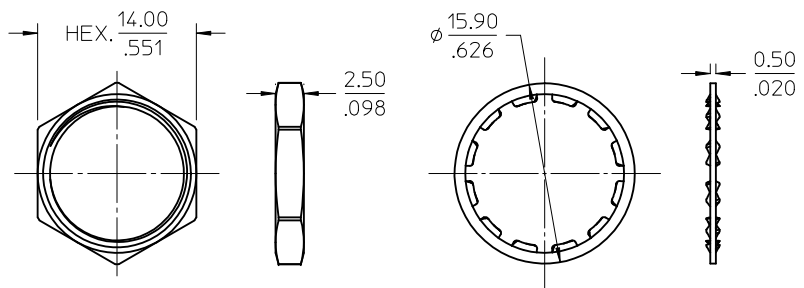
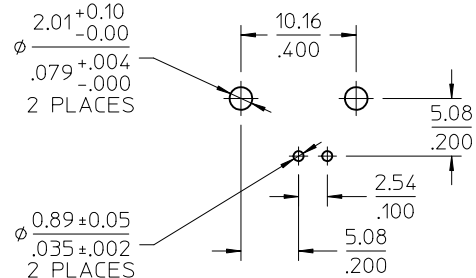
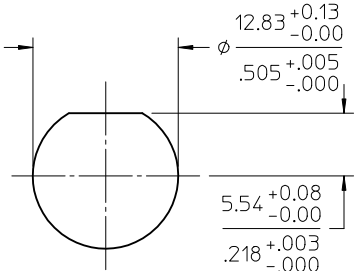
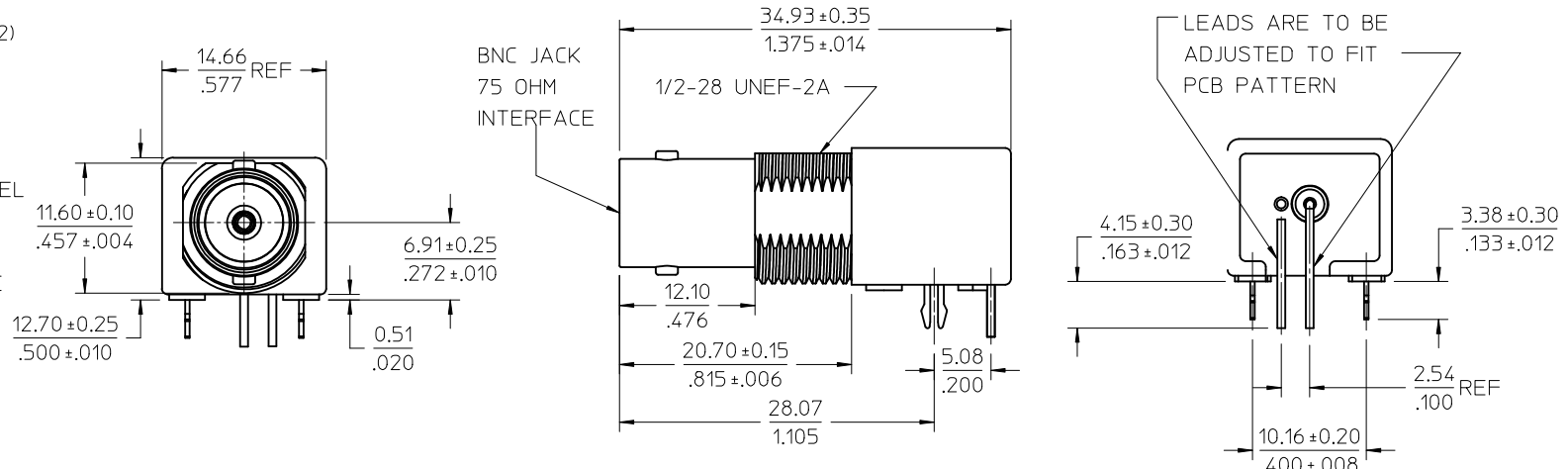
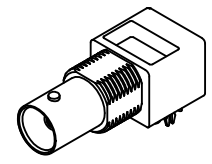
INSULATOR: POLYPROPYLENE(94V2)

BOARD LOCK: PHOSPHOR BRONZE  
PLATED TIN

SOLDER TAIL: COPPER OVER STEEL  
PLATED TIN

LOCKWASHER: PHOSPHOR BRONZE  
PLATED NICKEL

JAM NUT: BRASS  
PLATED NICKEL



RECOMMENDED MOUNTING HOLE  
PANEL THICKNESS: 5.40(.216) MAX.  
RECOMMENED MOUNTING TORQUE:  
1.36 N-m(12 INCH LBS) MAX.

RECOMMENDED PCB HOLE  
CONFIGURATION

73171-0561	ONE PER BAG
73171-0560	BULK
PART NO.	PACKAGING

PS-89675-1030	PRODUCT SPECIFICATION
SPECIFICATION	DESCRIPTION

CHG: ADD -0561	DESCRIPTION
EC NO: URF2012-0448	DRWINBOMALLEY 2012/02/03
CHKD: AZR	APPR: JW IENER 2012/02/06
REV	A2

QUALITY SYMBOLS	GENERAL TOLERANCES (UNLESS SPECIFIED)
▽=0	mm INCH
▽=0	4 PLACES ± --- ± ---
	3 PLACES ± --- ± ---
	2 PLACES ± --- ± ---
	1 PLACE ± --- ± ---
	ANGULAR ± 2 °
	DRAFT WHERE APPLICABLE MUST REMAIN WITHIN DIMENSIONS

DIMENSION STYLE	SCALE	DESIGN UNITS	THIRD ANGLE PROJECTION
MM/IN	METRIC		
DRAWN BY	DATE	TITLE	
CWE102	2011/09/13	BNC JACK R/A PCB, 75 OHM DIE CAST BNC-J/RA/PCB	
CHECKED BY	DATE		
AZR	2012/2/1		
APPROVED BY	DATE		
JWIENER	2012/02/06		
MATERIAL NO.	DOCUMENT NO.		
SEE TABLE	SD-73171-056		

MATERIAL NO.	DOCUMENT NO.	SHEET NO.
SEE TABLE	SD-73171-056	1 OF 1
THIS DRAWING CONTAINS INFORMATION THAT IS PROPRIETARY TO MOLEX INCORPORATED AND SHOULD NOT BE USED WITHOUT WRITTEN PERMISSION		