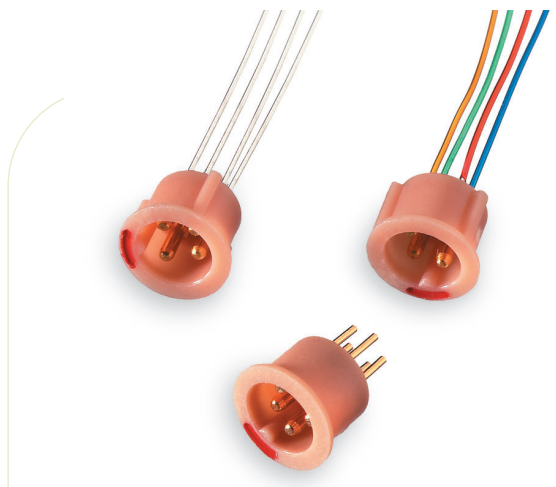


model **09**
**CONNECTOR SOCKET
 AND COVER**

technical datasheet



> **features** <

- Choice of rigid, flexible or flexible insulated leads
- Compatible with all standard cable assemblies
- Different key tab styles
- Different plastic colors available
- Versions with three, four or five terminals
- Socket covers available in different styles and colors

> **specifications** <

Mechanical Data

Insertion Force (socket/plug)	
Socket (3 terminals)	>2.5 N (0.6 lb.)
Socket (4 terminals)	>3.0 N (0.7 lb.)
Socket (5 terminals)	>4.0 N (0.9 lb.)
Extraction Force (socket/plug)	
Socket (3 terminals)	<5.5 N (1.2 lb.)
Socket (4 terminals)	<8.0 N (1.8 lb.)
Socket (5 terminals)	<8.0 N (1.8 lb.)

Electrical Data

(socket connected to plug)	
Contact Resistance	<150 mΩ
Contact Resistance Stability	<150 mΩ
(pulling with 100 g (0.22 lb.) in all directions)	
Insulation Resistance	>1 MΩ
Current (continuous)	=500 mA max.

Environmental Data

Soldering Temperature/	
Time	260°C (500°F)/3 seconds
Soldering Distance	
from Housing	0.5 mm (0.02 in.)
Bending of Terminals	
Rigid Terminals	>2 times 45°
Flexible Terminals	>5 times 90°

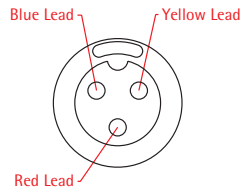
Construction

Housing	Thermoplastic
Contact Pin	Gold-plated
Wires	According DIN 46435 (IEC 60 182)
Specifications subject to change.	

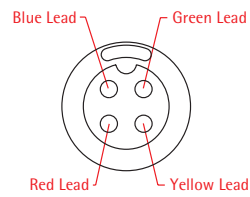


I number of terminals

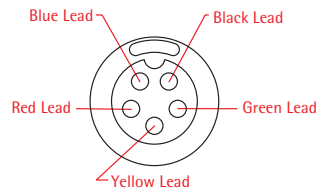
Blue ground terminal is 0.2 mm (0.008 in.) longer than other terminals.



[3] 3 TERMINALS



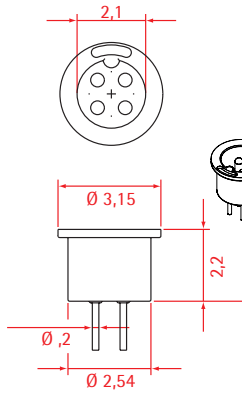
[4] 4 TERMINALS



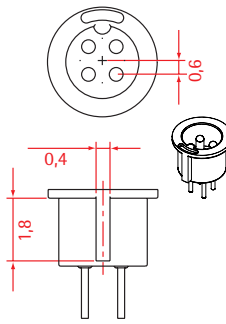
[5] 5 TERMINALS

II body style

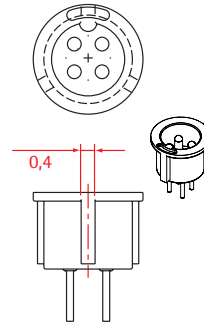
Dimensions shown in millimeters.
 Available in 3, 4, or 5 pin unless otherwise noted.
 All units are shown with rigid leads.



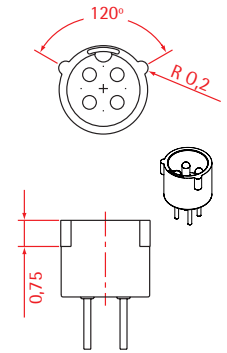
[00] STYLE 00



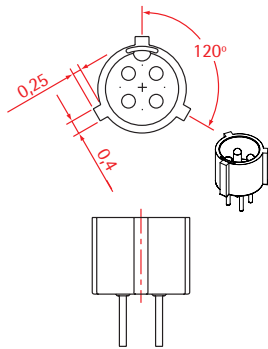
[01] STYLE 01



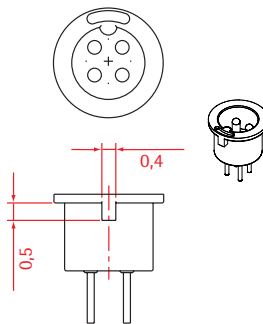
[02] STYLE 02



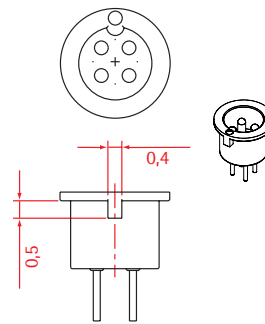
[03] STYLE 03



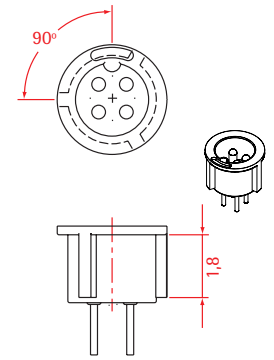
[04] STYLE 04



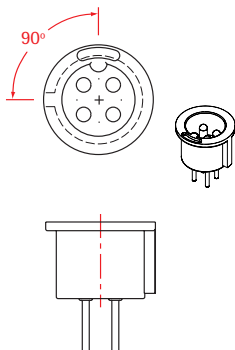
[05] STYLE 05



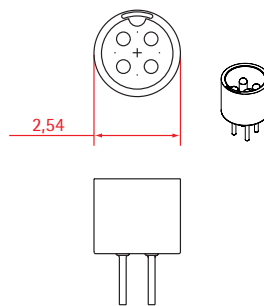
[06] STYLE 06



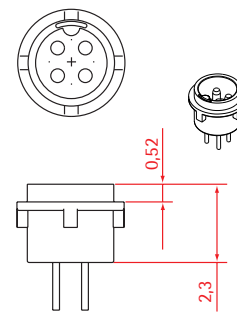
[07] STYLE 07



[08] STYLE 08

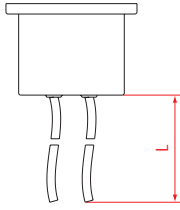


[09] STYLE 09

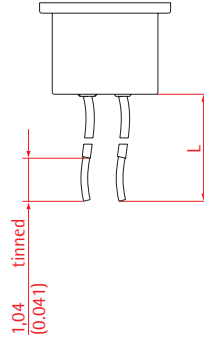


[10] STYLE 10
 Not available in 5 pin.

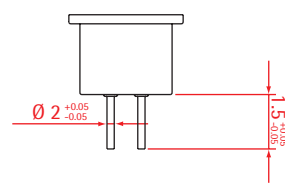
III terminal style



[0] FLEXIBLE TERMINALS
(UNINSULATED)



[1] FLEXIBLE TERMINALS
(INSULATED)



[5] RIGID TERMINALS
(UNINSULATED)

Note: Other terminal styles available upon request.

IV length of wires

[015] RIGID UNINSULATED TERMINALS
STANDARD LENGTH: 1.5 MM

[XXX] FLEXIBLE TERMINAL STANDARD LENGTHS:
5, 10, 15, 20, 25, 30 (MM)
0.2, 0.4, 0.6, 0.8, 1.0, 1.2 (IN.)

Order by mm only.

Example: 25 mm = 250

VI color dot

[01] BLACK	[06] PINK
[02] BLUE	[07] RED
[03] BROWN	[08] VIOLET
[04] GREEN	[09] WHITE
[05] ORANGE	[10] YELLOW

ordering

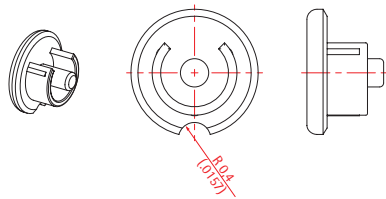
How to order— Using the chart below, determine your order number by finding the correct sequence of code numbers and /or letters as shown at right. Details on each parameter can be found within the brochure in the section with the corresponding roman numeral.

	model	I number of terminals	II body style	III terminal style	IV length of wires	V body color	VI color dot
09	X	XX	X	XXX	XX	XX	

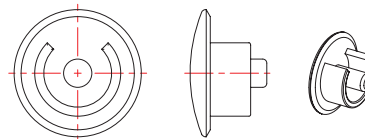
PARAMETER	YOUR CHOICE	GUIDELINES/NOTES
I number of terminals		
II body style		
III terminal style		
IV length of wires		
V body color		Standard colors available: 10, 16, 20, 21, 22, 23, 24, 25, 28, 46. Additional colors available, see Color Chip Chart in Appendix.
VI color dot		

I cover style

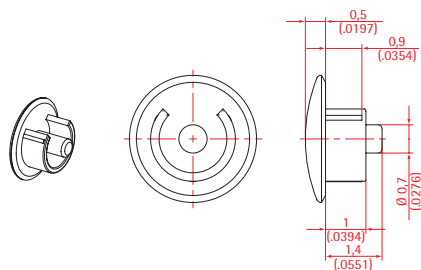
Dimensions shown in millimeters (inches in parentheses).



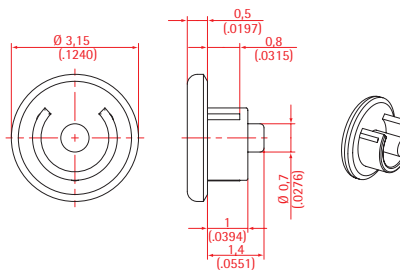
[00] STYLE 00



[01] STYLE 01



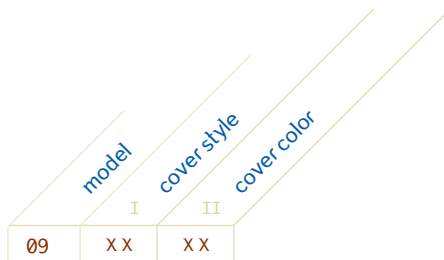
[02] STYLE 02



[12] STYLE 12
(HIGHER PULL OUT FORCE)

> ordering <

How to order— Using the chart below, determine your order number by finding the correct sequence of code numbers and/or letters as shown at right. Details on each parameter can be found within the brochure in the section with the corresponding roman numeral.



PARAMETER	YOUR CHOICE	GUIDELINES/NOTES
I cover style		
II cover color		Standard colors available: 10, 16, 20, 21, 22, 23, 24, 25, 28, 46. Additional colors available, see Color Chip Chart in Appendix.