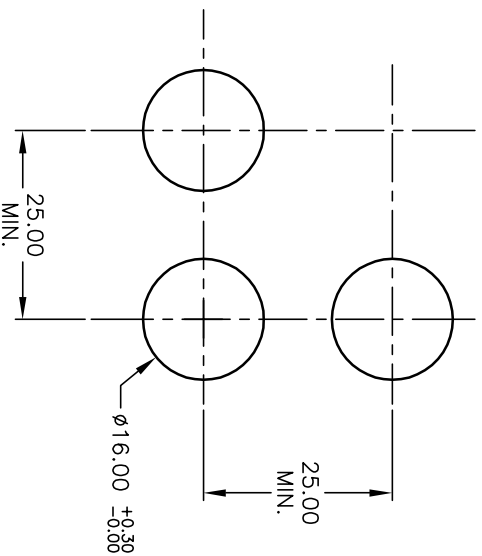
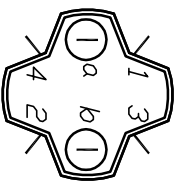
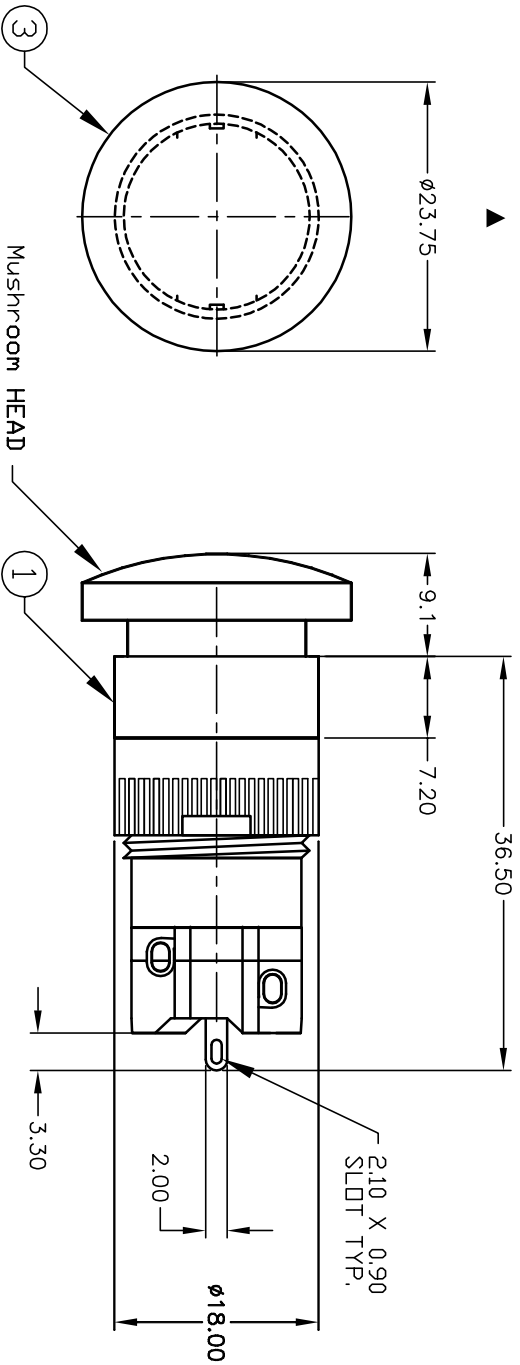


| PARTS LIST | | | |
|------------|------|----------|----------------------------------|
| ITEM | QTY. | PART NO. | PART DESCRIPTION |
| 1 | 1 | F040009 | D16 OA R1 1 |
| 2 | 1 | F050419 | 50-004-19 (GRN LED) |
| 3 | 1 | F051211 | 50-012-11 (Transparent GRN lens) |



1 o l o 2
3 o o 4
a-(L)-b (+)

SPST
CONTACT CONFIGURATION

RECOMMENDED PANEL MOUNTING
SCALE 1:1

- NOTES:
1. ALL DIMENSIONS IN MM
 2. GENERAL TOLERANCE: X.X=±0.4
X.XX=±0.25
 3. RATINGS: 5A @250V AC
8A @125V AC
UL, VDE, CSA, Semko, Nemko, Demko, Firmko Approved
 4. CONTACT MATERIAL:
COPPER ALLOY W/Silver Plating
 5. LAMP VOLTAGE: 12V DC
 6. ▲ DENOTES CRITICAL PARAMETER.

| | | | | |
|------|---------|-------------------------|---------|------|
| A | 13359 | RELEASED FOR PRODUCTION | 8/11/03 | AR |
| REV. | ECN No. | DESCRIPTION | DATE | CHKD |

| | | | | |
|----------------|---------|----|---------|-----|
| TITLE | | | | |
| D160AR1JGRNGRN | | | | |
| SCALE | DATE | DR | DWG | REV |
| 1.5:1 | 8/11/03 | AR | XF0563P | A |

THE INFORMATION CONTAINED IN THIS DOCUMENT IS PROPRIETARY TO E-SWITCH AND IS NOT TO BE COPIED OR TRANSFERRED

E-SWITCH®