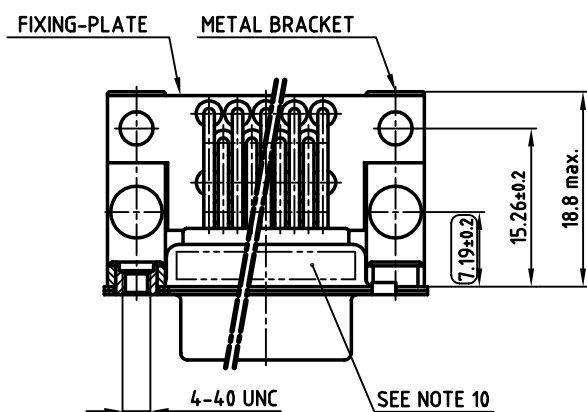
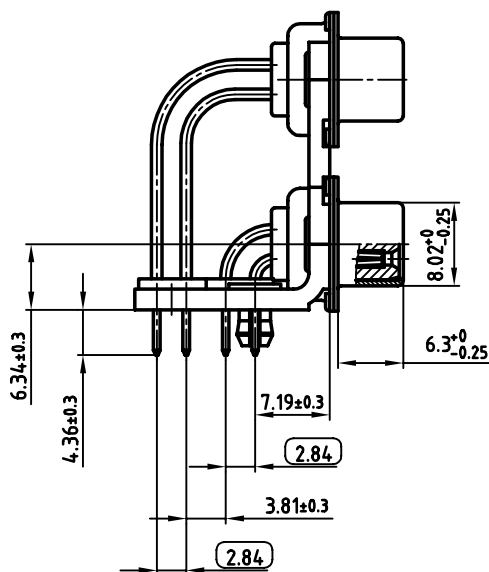
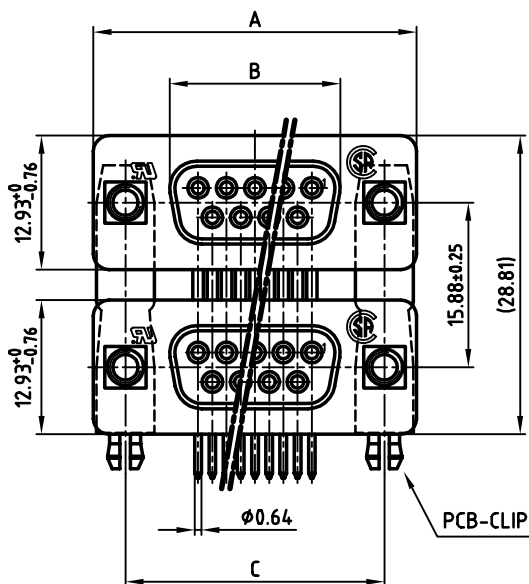


used for: D-SUB Dual Port

POS.	A -0.76	B -0.25	C	PART-NO.
2x 9	31.19	16.46	25.00 ^{+0.12} _{-0.13}	164A20409X
2x15	39.52	24.79	33.30 ^{+0.15} _{-0.1}	164A20419X
2x25	53.42	38.50	47.04 ^{+0.13}	164A20429X
2x37	69.70	54.96	63.50 ^{+0.13}	164A20439X



NOTES:

- METALSHELLS: STEEL; min. 320µ" TIN
- INSULATORS: PBT GF UL 94 V-0, BLACK
- CONTACTS: COPPER ALLOY
PLATING: 8µ" HARD GOLD OVER min. 50µ" NICKEL
- METAL BRACKET: STEEL; min. 320µ" TIN over 80µ" NICKEL
- THREADED INSERT: COPPER ALLOY; min. 200µ" TIN over 80µ" NICKEL
- FIXING-PLATE: PBT GF UL 94 V-0, BLACK
- PCB-SNAP: COPPER ALLOY; min. 200µ" TIN over 80µ" NICKEL
PCB-HOLE: $\phi 3.1 \pm 0.1$; PCB THICKNESS 1.6mm
- P.C.B. HOLE DRILLINGS ON SHEET 2 + 3
- MAXIMUM TORQUE VALUE FOR THREAD: 6" LBS
- CONNECTOR IS PART MARKED: PART-NO. CONEC Y/WW
- = CHECK DIMENSION

Directive 2002/95/EC
RoHS
Compliant

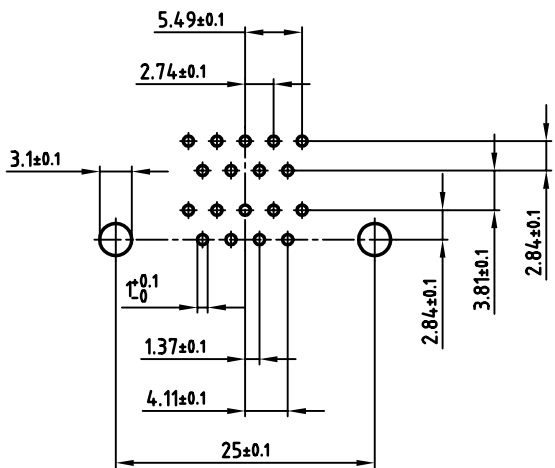
APPROVAL # FREIGABE # DEBLOCAGE # AUTORIZACION # APPROVAL	
CUSTOMER APPROVAL DATE:	
NAME:	TITLE:
COMPANY NAME:	
APPROVAL # FREIGABE # DEBLOCAGE # AUTORIZACION # APPROVAL	

THIS DRAWING MAY NOT BE COPIED OR REPRODUCED IN ANY WAY, AND MAY NOT BE PASSED ON TO A THIRD PARTY, WITHOUT WRITTEN PERMISSION. OWNERSHIP AND COPYRIGHT OF CONEC GmbH DO NOT ALTER CAD DRAWING BY HAND

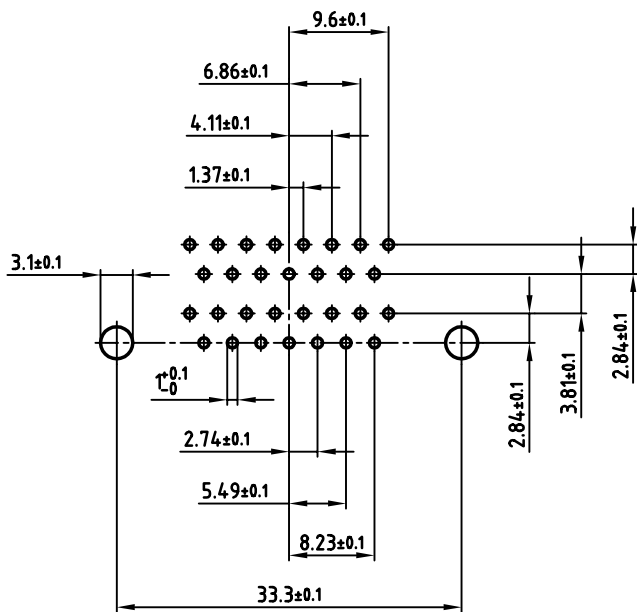
rev.	description	date	name

tolerance	dim. in mm	scale:	2:1
		material:	SEE NOTES
2003	date	name	title: DUAL PORT 15.88mm FEMALE / FEMALE 2x9pos. - 2x37pos. with threaded insert and 2 x PCB clip
drawn	22.04.	Parei	
appd.	22.04.	Kühle	
norm	DIN 41652		
d-old			dwg no: AutoCAD 2000 DIN-A
CONEC			16K1A945
part no:			SEE TABLE
			3 sh:1/3

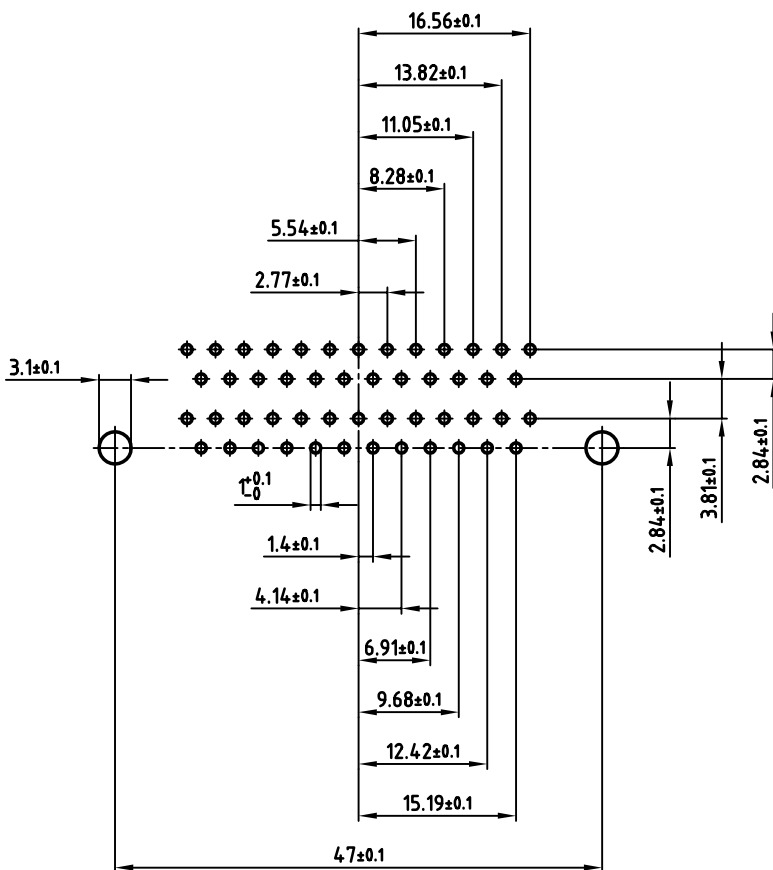
used for: D-SUB Dual Port



2x9 pos.



2x15 pos.



2x25 pos.

APPROVAL # FREIGABE # DEBLOCAGE # AUTOR/ZACON # APPROVAL

CUSTOMER APPROVAL DATE:

NAME: TITLE:

COMPANY NAME:

APPROVAL # FREIGABE # DEBLOCAGE # AUTOR/ZACON # APPROVAL

THIS DRAWING MAY NOT BE COPIED OR REPRODUCED IN ANY WAY, AND MAY NOT BE PASSED ON TO A THIRD PARTY, WITHOUT WRITTEN PERMISSION. OWNERSHIP AND COPYRIGHT OF CONEC GmbH DO NOT ALTER CAD DRAWING BY HAND

rev.	description	date	name

tolerance		dim. in mm
2003	date	name
drawn	22.04.	Parei
appd.	22.04.	Kühle
norm	DIN 41652	
d-old		
CONEC		

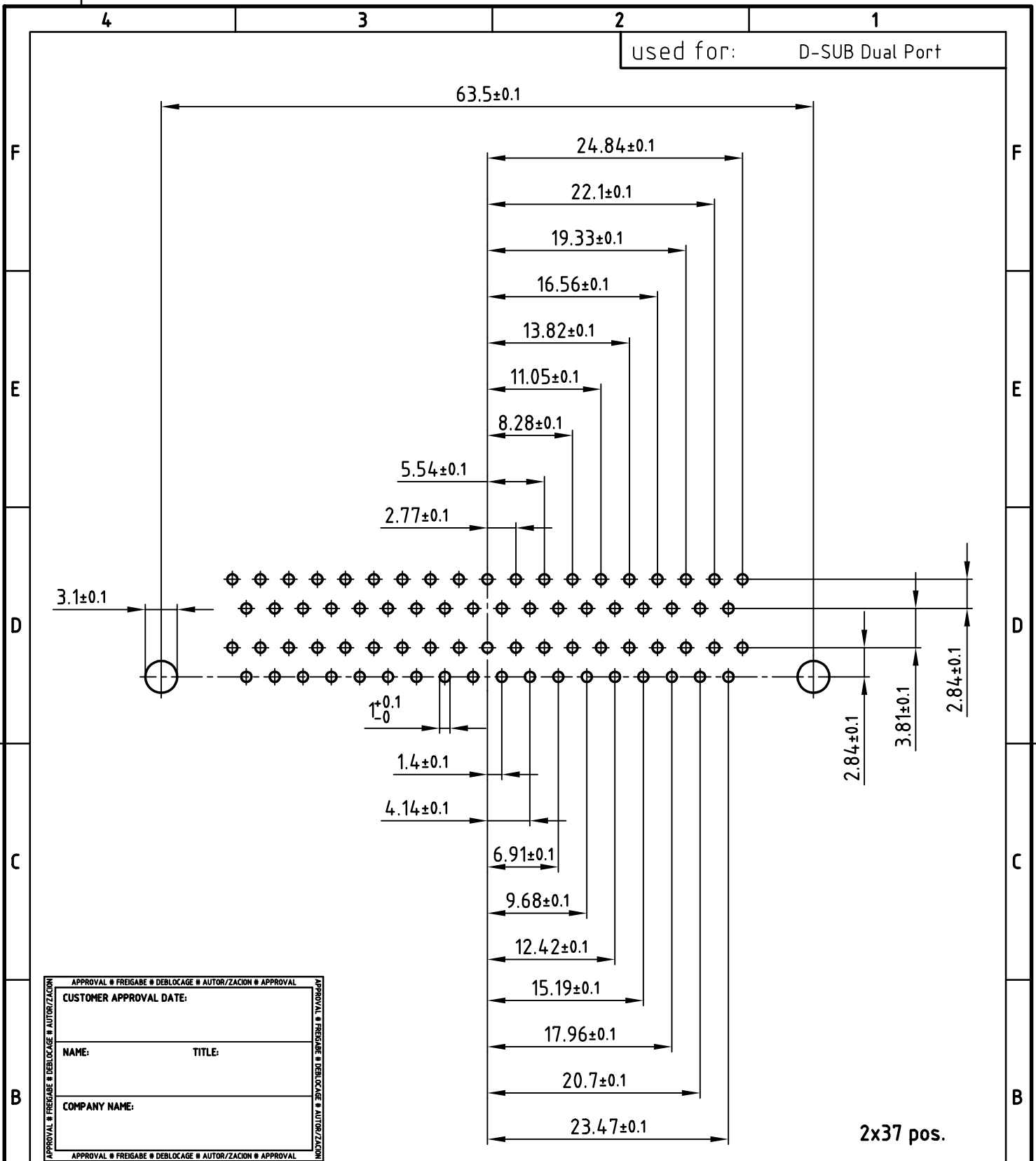
scale: 2:1

material: SEE SHEET 1

title: P.C.B. HOLE DRILLINGS
DUAL PORT 15.88mm FEMALE / FEMALE
with threaded insert and 2 x PCB clip

dwg no: AutoCAD 2000 DIN-A
16K1A945 3 sh:2/3

part no: SEE SHEET 1



APPROVAL # FREIGABE # DEBLOCAGE # AUTORIZACION # APPROVAL	
CUSTOMER APPROVAL DATE:	
NAME:	TITLE:
COMPANY NAME:	
APPROVAL # FREIGABE # DEBLOCAGE # AUTORIZACION # APPROVAL	

THIS DRAWING MAY NOT BE COPIED OR REPRODUCED IN ANY WAY, AND MAY NOT BE PASSED ON TO A THIRD PARTY WITHOUT WRITTEN PERMISSION.
 OWNERSHIP AND COPYRIGHT OF CONEC GmbH
 DO NOT ALTER CAD DRAWING BY HAND

tolerance			dim. in mm		
2003	date	name	scale: 2:1		
drawn	22.04.	Parei	material: SEE SHEET 1		
appd.	22.04.	Kühle	title: P.C.B. HOLE DRILLINGS		
norm	DIN 41652		DUAL PORT 15.88mm FEMALE / FEMALE		
d-old			with threaded insert and 2 x PCB clip		
rev.	description	date	name	dwg no: AutoCAD 2000	
				DIN-A	
				4	
part no: SEE SHEET 1				sh:3/3	

part no: SEE SHEET 1	
----------------------	--