

PANDUIT

Auto-Run Installation

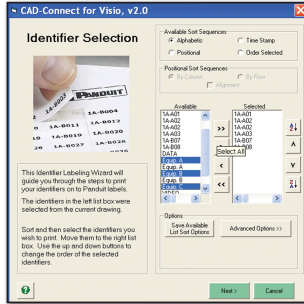
Insert software into the CD-ROM drive. Installation will begin automatically.

If Installation Does Not Start Automatically

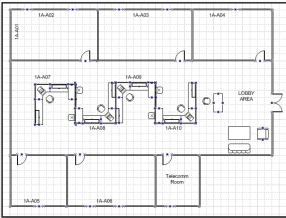
1. Choose Start\Run
2. Type the letter of the CD-ROM drive followed by the filename "Setup.exe". (For example "D:\Setup.exe".)
3. Click on OK and proceed with installation.

Note: During installation, you will be asked to enter the serial number of your copy of Easy-Mark. The individual serial number for your program can be found on the inside cover of the software case.

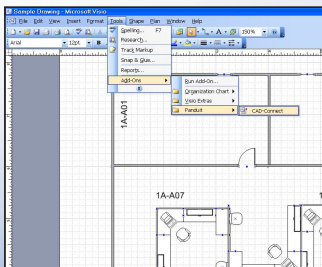
Step 2: Select and organize identifiers



Start with existing CAD drawing with identifiers



Step 1: Launch CAD-Connect tool from within the design software



Visio[^]

With a Visio drawing open, start the CAD-Connect wizard by selecting "Tools>Add-ons>Panduit>CAD-Connect."

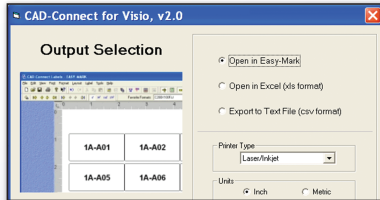
AutoCAD[‡]

The CAD-Connect installation will install a new header menu titled Panduit in AutoCAD[‡]. With an AutoCAD[‡] drawing open, start the CAD-Connect wizard by selecting "Panduit CAD-Connect."

[^]Visio is a registered trademark of Microsoft Corp. in the United States of America and/or other countries.

[‡]AutoCAD is a registered trademark of Autodesk, Inc.

Step 3: Choose the output method for the selected identifiers



Step 4: Select the label format

