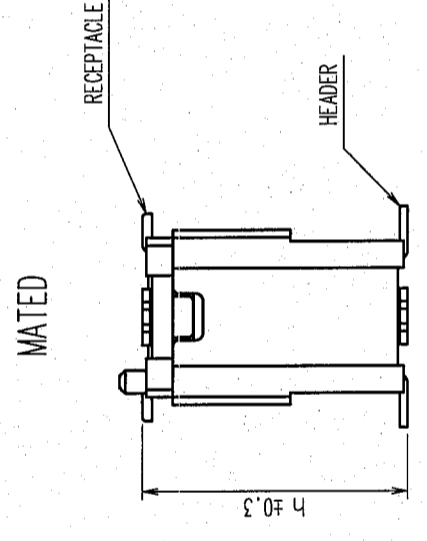
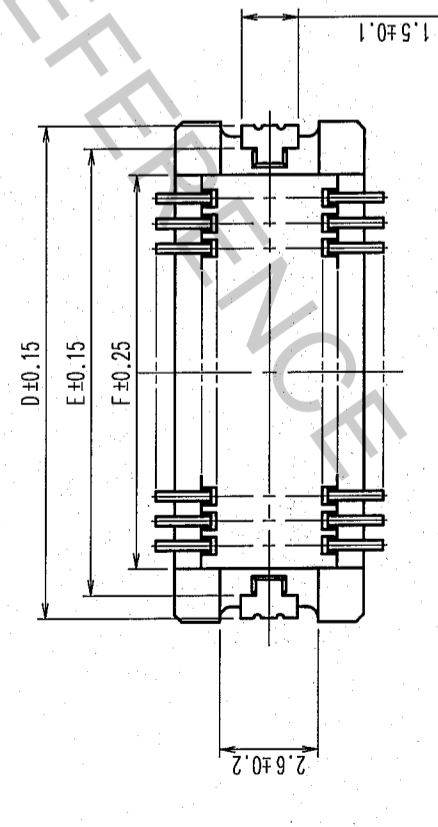
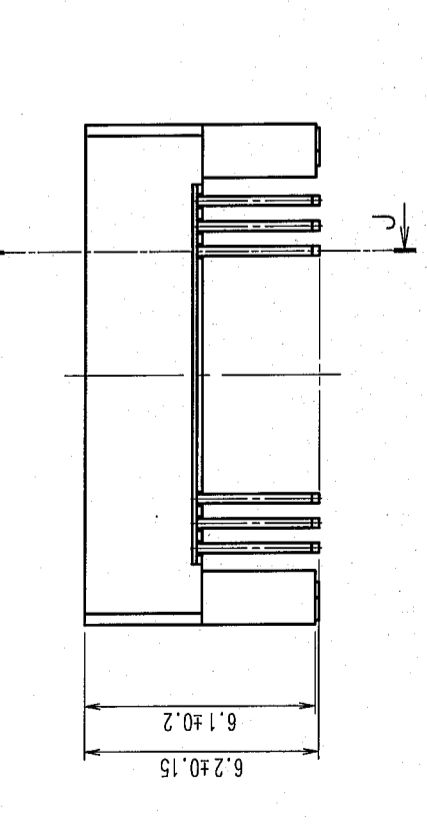
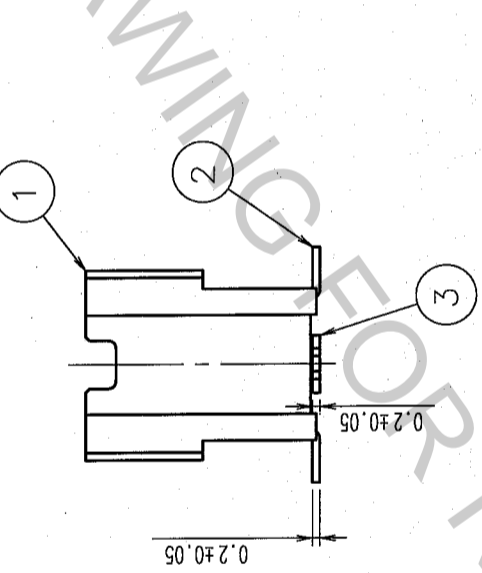
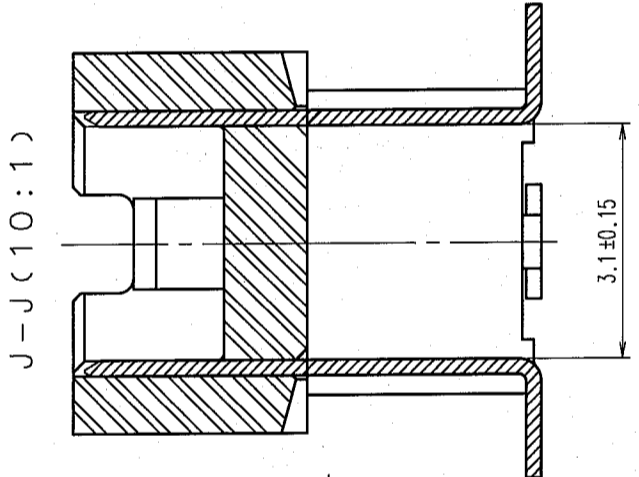
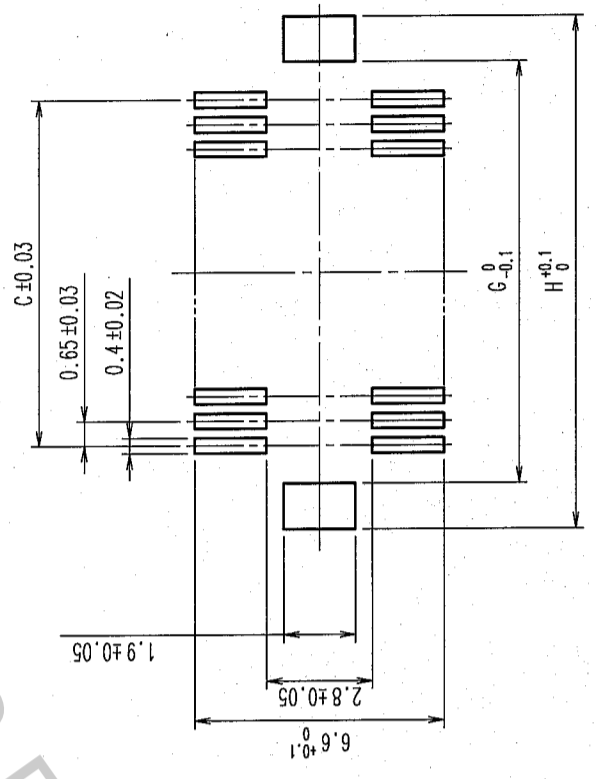


COUNT	DESCRIPTION OF REVISIONS	BY	CHKD	DATE	COUNT	DESCRIPTION OF REVISIONS	BY	CHKD	DATE
△					△				
△					△				

PART NO.	CODE NO.	CONTACT	A	B	C	D	E	F	G	H
DF15B(6.2)-200P-0.65V(56)	CL677-0182-4-56	20	9.85	7.45	5.85	9.65	8.45	7.05	7.85	10.25
DF15B(6.2)-300P-0.65V(56)	CL677-0183-7-56	30	13.1	10.7	9.1	12.9	11.7	10.3	11.1	13.5
DF15B(6.2)-400P-0.65V(56)	CL677-0184-0-56	40	16.35	13.95	12.35	16.15	14.95	13.55	14.35	16.75
DF15B(6.2)-500P-0.65V(56)	CL677-0185-2-56	50	19.6	17.2	15.6	19.4	18.2	16.8	17.6	20.0



RECOMMENDED PATTERN



NOTES 1. LEAD CO-PLANARITY INCLUDE REINFORCED METAL FITTINGS SHALL BE 0.1 mm MAX.

NO.	MATERIAL	FINISH, REMARKS	NO.	MATERIAL	FINISH, REMARKS
1	PHOSPHOR BRONZE	CONTACT AREA: GOLD PLATED 0.1μm min LEAD AREA: TIN PLATED 1μm min	6	PS	BLACK (PLASTIC REEL) CLEAR (COVER TAPE)
2	POLYAMIDE (PA6T)	UNDER PLATING: NICKEL PLATED 1μm min NATURAL (BEIGE), UL94V-0	5	POLYESTER	CLEAR (EMBOSSED CARRIER TAPE)
			4	PS	TIN PLATED 1μm min
			3	BRASS	UNDER PLATING: NICKEL PLATED 1μm min

MATED HEIGHT (h)	RECEPTACLE NO.	HEADER NO.	DF15B(6.2)-*DP-0.65V(56)
7	DF15#(0.8)-*DS-0.65V(56)		
8	DF15#(1.8)-*DS-0.65V(56)		

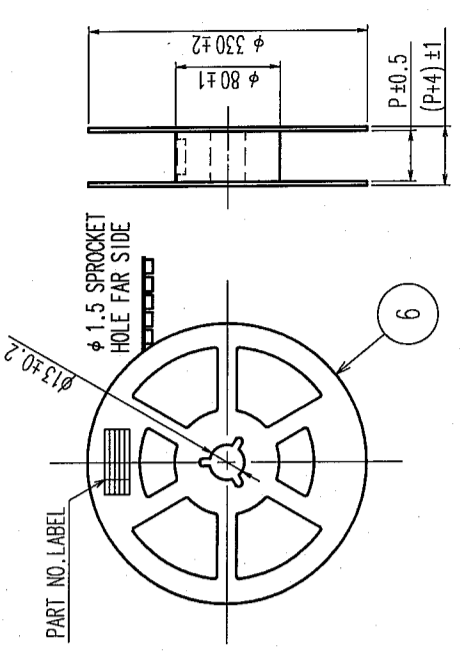
DRAWING NO. EDC3-302783-06 SCALE 5 : 1 UNITS mm	DRAWN <i>A. Mochida</i> DESIGNED <i>J. Mochida</i> CHECKED <i>J. Mochida</i> APPROVED <i>K. Okada</i> DATE 06.02.07	PART NO. DF15B(6.2)-*DP-0.65V(56) CODE NO. CL677
--	--	---

COUNT	DESCRIPTION OF REVISIONS	BY	CHKD	DATE

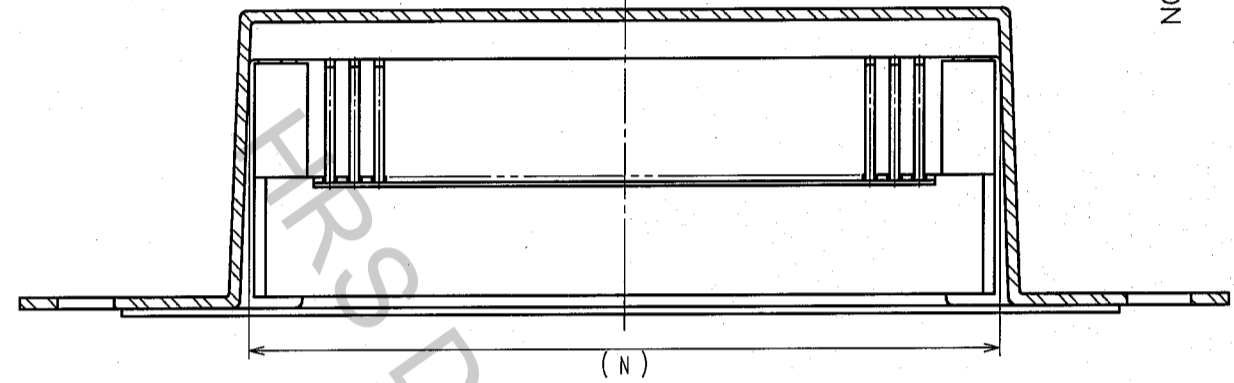
COUNT	DESCRIPTION OF REVISIONS	BY	CHKD	DATE

COUNT	DESCRIPTION OF REVISIONS	BY	CHKD	DATE

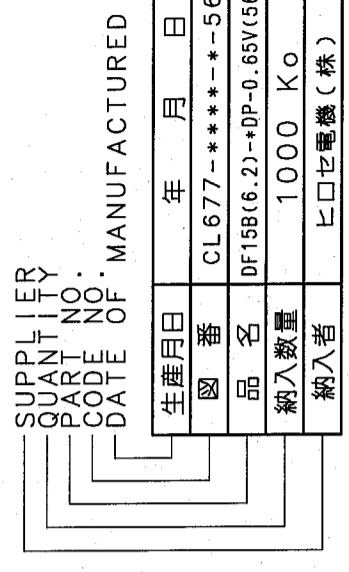
STYLE AND DIMENSION OF REEL (FREE)



Q-Q



DETAIL OF PART NO. LABEL

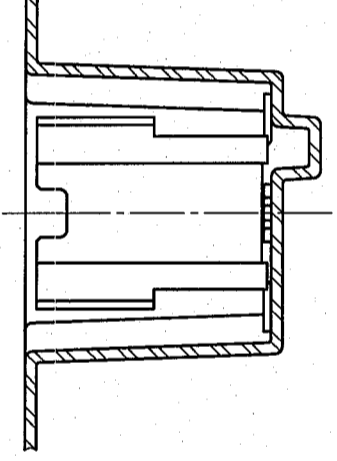


- NOTES
- 1 REEL: 1000 CONNECTORS.
 - 2: AT THE BEGINNING OF THE REEL, 30 COMPONENTS SHALL BE EMPTY. AT THE END OF THE REEL, 20 COMPONENTS SHALL BE 'EMPTY'.
 - 3: WHEN THE TAPE WIDTH IS 32mm, BOTH SIDES OF REEL SHALL BE SET ON THIS DRAWING.
 - 4: PEEL FORCE REFERS TO JIS C 0806.

PART NO.	CODE NO.	K	L	M	N	P
DF15B(6.2)-20DP-0.65V(56)	CL677-0182-4-56	16.0	-	7.5	10.15	17.5
DF15B(6.2)-30DP-0.65V(56)	CL677-0183-7-56	24.0	-	11.5	13.4	25.5
DF15B(6.2)-40DP-0.65V(56)	CL677-0184-0-56	24.0	-	11.5	16.65	25.5
DF15B(6.2)-50DP-0.65V(56)	CL677-0185-2-56	32.0	28.4	14.2	19.9	33.5

DIRECTION OF UNREELING

R-R



DRAWING NO.

EDC3-302783-06

SCALE

FREE

UNITS

mm

PART NO.

DF15B(6.2)-*DP-0.65V(56)

CODE NO.

CL677-

2/2

HIROSE ELECTRIC CO., LTD

HRS