

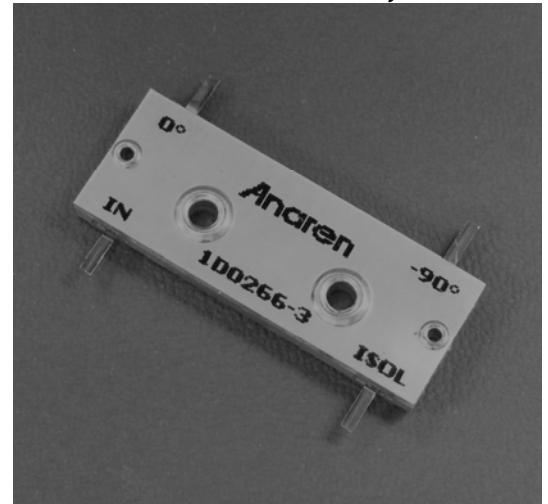
### Hybrid Couplers 3 dB, 90°

#### Applications

- Microstrip Circuits
- Dividers/Combiners
- Switch Networks
- Balanced Detectors
- Antenna Feeds

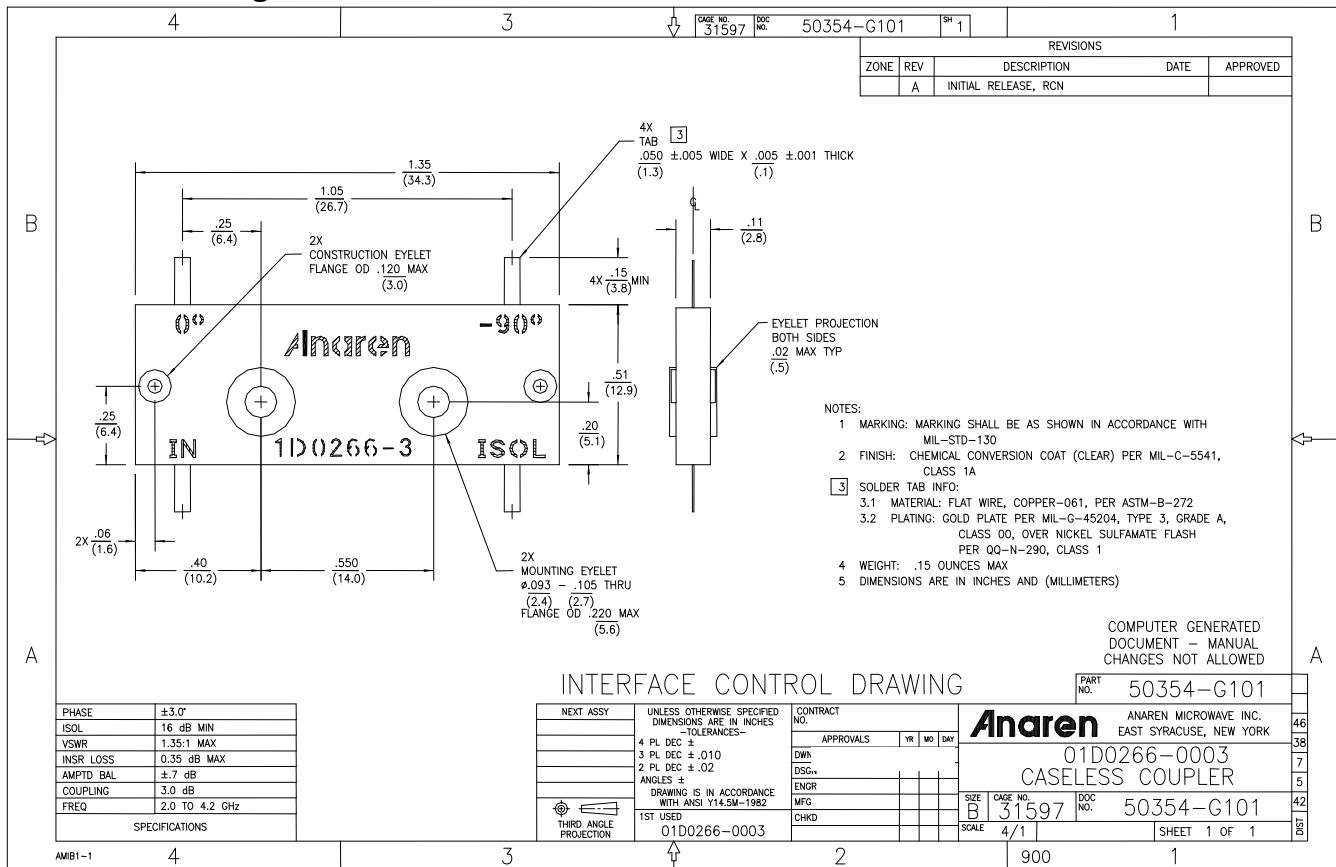
#### Features

- 2.0 – 4.2 GHz
- Welded Tab mount
- Reliable Performance
- Handles 60 Watts
- Meets MIL-E-5400 Class 3 Requirements



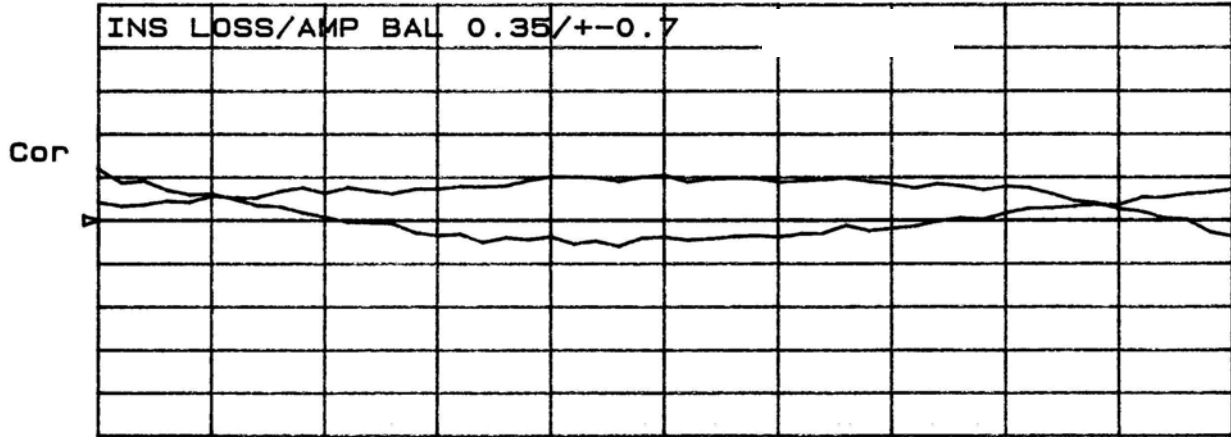
**NOTES:** Anaren Power rating applies when solder tab/coupler interface has been conformally coated.  
Electrical and Mechanical Specifications subject to change without notice.

#### Outline Drawing



Typical Test Data Plots

CH1 S<sub>21</sub>&M log MAG 0.7 dB/ REF -3.35 dB



CH2 MEM log MAG 5 dB/ REF -16 dB

