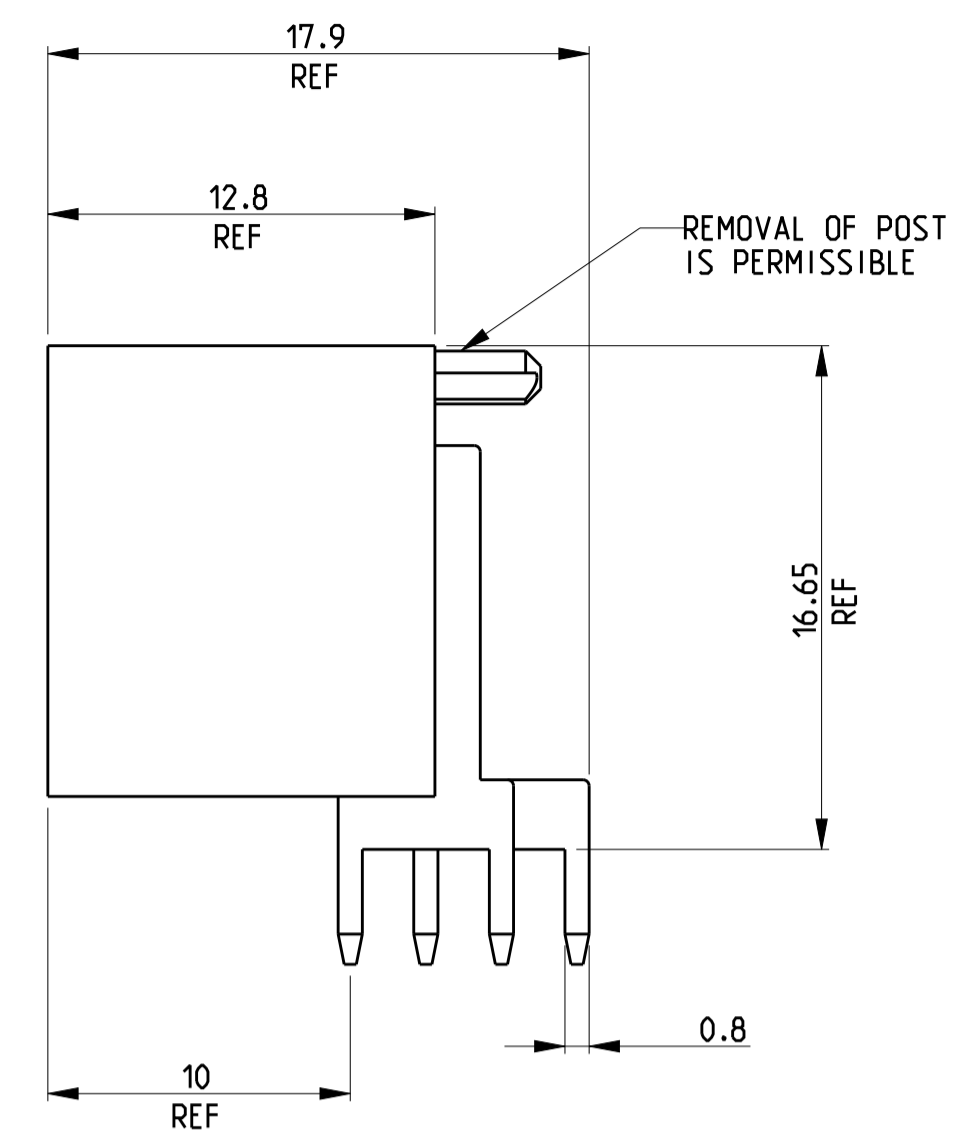
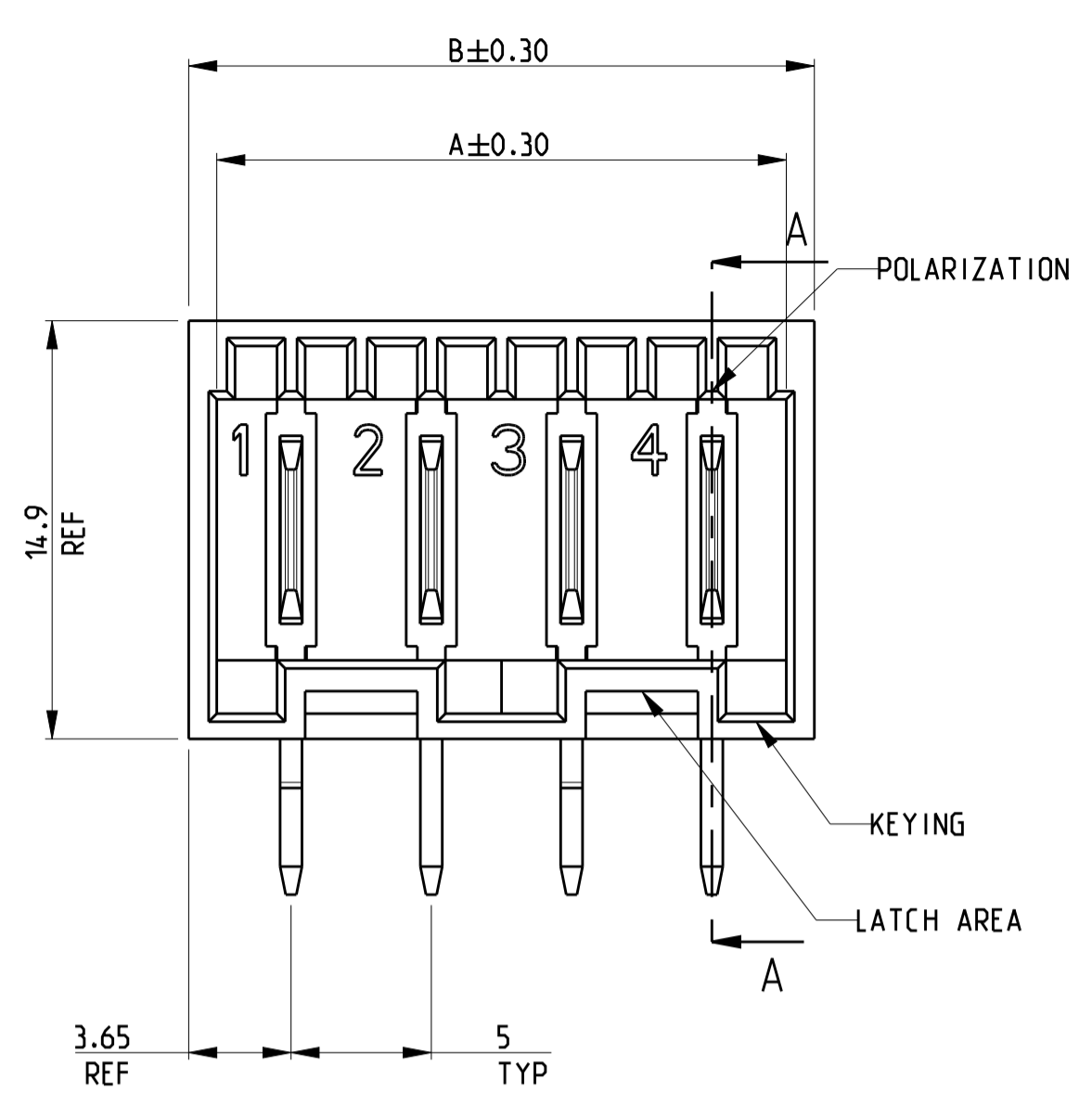
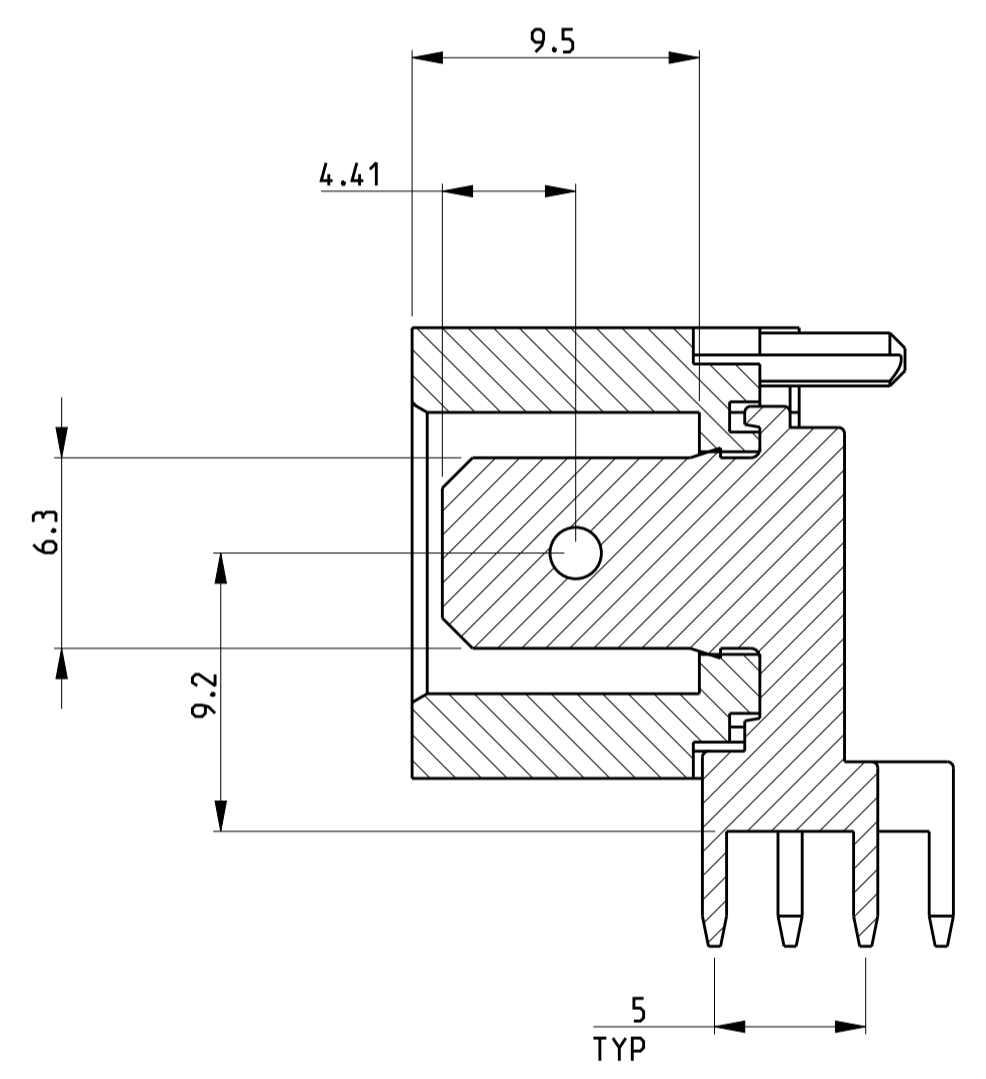
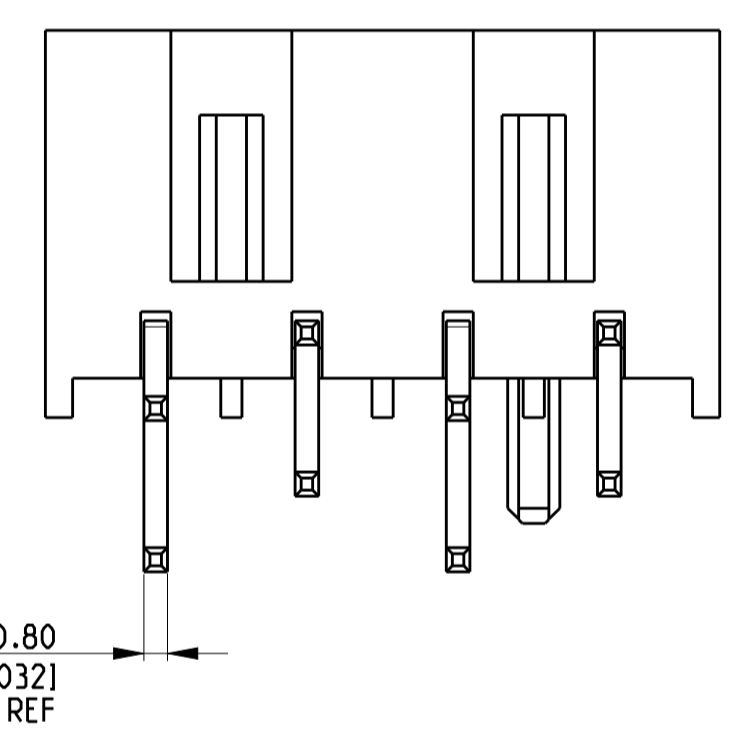


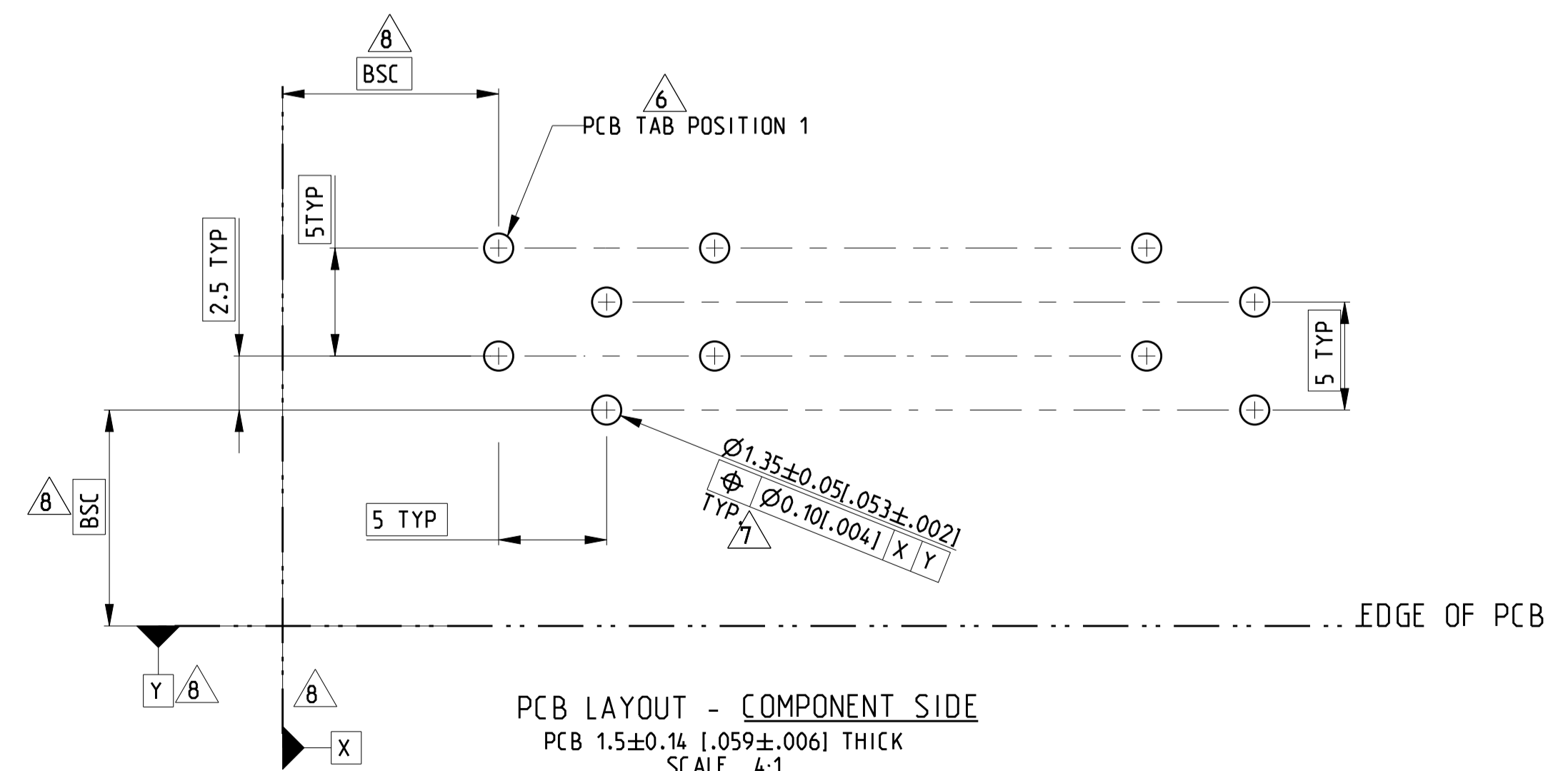
| LOC | DIST | REVISIONS | | | | | |
|-----|------|-----------|-----|---------------|--------------|-----|------|
| | | P | LTR | DESCRIPTION | DATE | DWN | APVD |
| AF | 50 | A1 | | ECR-12-010297 | 29.JUNE.2012 | C.J | R.P |



1. HOUSING HAS RAST 5 COMPLIANT KEYING, LATCHING, AND POLARIZATION. TAB IS 6.3 x 0.8 (1.250 x .032) ACCORDING TO DIN 46244.
2. POSSIBLE TE MATING CONNECTOR FAMILIES INCLUDE STANDARD TIMER RAST 5, MULTIFITTING, MULTIFITTING MK11, AND MONO-SHAPE TAB CONNECTORS.
3. SEE SHEET 2 FOR AVAILABLE CONFIGURATIONS .
- 4 MATERIAL: HOUSING, PA6 NYLON, UL 94V-2, CONTACT, BRASS, 0.8 mm THICK.
- 5 FINISH: CONTACTS, 3.8 μm MIN TIN OVER 1.3 μm MIN NICKEL.
- 6 PCB TABS INSERTED IN A STAGGERED PATTERN BEGINNING WITH POSITION 1.
- 7 SELECTED HOLES MAY BE 1.05+0.05/-0.00 DIA [1.041+.002/-0.001 DIA] FOR IMPROVED (PRESS-FIT) RETENTION TO P.C.B. PRIOR TO SOLDERING.
- 8 DATUM AND BASIC DIMENSION ESTABLISHED BY CUSTOMER
9. PRODUCT QUALIFICATION PER 108-2183
- 10 GWT (GLOW WIRE TEST) 750°C WITHOUT FLAME
NOTE TO CUSTOMER TESTING PENDING. THE SHROUD USED ON THESE ASSEMBLIES PASSED THIS REQUIREMENT ON P/N 521971, VDE REG - NR 6718
- 11 PRELIMINARY - NOT FOR PRODUCTION



SECTION A-A

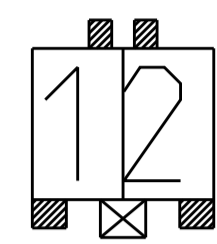


PCB LAYOUT - COMPONENT SIDE
 PCB 1.5±0.14 [1.059±.006] THICK
 SCALE 4:1

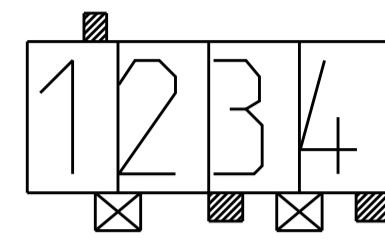
| | | |
|------|------|-------------|
| 47.3 | 45.3 | 9 |
| 42.3 | 40.3 | 8 |
| 37.3 | 35.3 | 7 |
| 32.3 | 30.3 | 6 |
| 27.3 | 25.3 | 5 |
| 22.3 | 20.3 | 4 |
| 17.3 | 15.3 | 3 |
| 12.3 | 10.3 | 2 |
| B | A | NO. OF POS. |

| | | | | |
|---|--|---------------------------|---|-----------------------|
| THIS DRAWING IS A CONTROLLED DOCUMENT. | | DWN RAGHAVENDRA 30MAR2010 | TE Connectivity | |
| DIMENSIONS: mm [INCHES] | | CHK JEFF RUTH 30MAR2010 | NAME ASSEMBLY, DIN, RAST 5 HEADER, RIGHT ANGLE, GWT | |
| TOLERANCES UNLESS OTHERWISE SPECIFIED: | | APVD RAY LONDON 30MAR2010 | PRODUCT SPEC 108-2183 APPLICATION SPEC | |
| 0 PLC ± 1 PLC ± 2 PLC ±0.25 [0.010] 3 PLC ± 4 PLC ± ANGLES ±2° FINISH | | SIZE A1 | CAGE CODE 00779 | DRAWING NO. C=1969352 |
| MATERIAL | | WEIGHT | RESTRICTED TO | |
| CUSTOMER DRAWING | | SCALE 4:1 | SHEET 1 OF 2 REV A1 | |

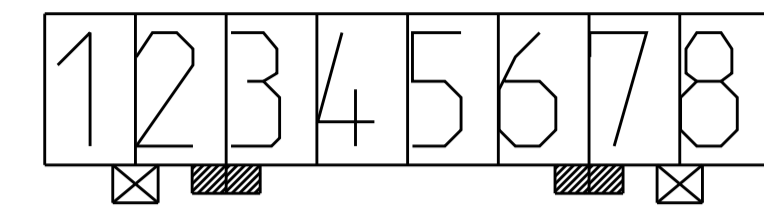
| LOC | | DIST | | REVISIONS | | | |
|-----|-----|-------------|------|-----------|------|--|--|
| P | LYR | DESCRIPTION | DATE | DWN | APVD | | |
| - | - | SEE SHEET 1 | - | - | - | | |
| | | | | | | | |



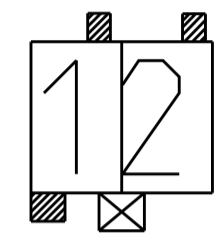
1969352-2



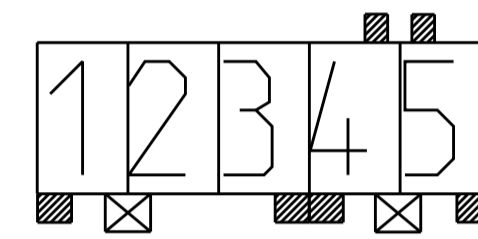
1969352-4



1969352-8



5-1969352-2



2-1969352-5

| | | | | | | |
|----------------|-------------|--------|-------------|---------------|--|-------------|
| 1-2,7-8 | 2d,3c,6d,7c | -- | 8 | 08-D | | 1969352-8 |
| 1-2,2-3 | 1c,3d,4c,5d | 4b,5a | 5 | - | | 2-1969352-5 |
| 1-2,3-4 | 3c,4d | 1b | 4 | 04-A | | 1969352-4 |
| 1-2 | 1c | 1b,2b | 2 | 02-I | | 5-1969352-2 |
| 1-2 | 1c,2d | 1b,2a | 2 | 02-A | | 1969352-2 |
| LATCH W INDOWS | KEYING | POLAR. | NO. OF POS. | RAST 5 DESIG. | | PART NUMBER |

| | | | |
|---|--|---|---|
| THIS DRAWING IS A CONTROLLED DOCUMENT. | | DWN RAGHAVENDRA 30MAR2010 | TE Connectivity ASSEMBLY, DIN, RAST 5 HEADER, RIGHT ANGLE, GWT |
| DIMENSIONS: mm INCHES | | CHK JEFF RUTH 30MAR2010 | |
| TOLERANCES UNLESS OTHERWISE SPECIFIED: 0 PLC ± 1 PLC ± 2 PLC ±0.25(.010) 3 PLC ± 4 PLC ± ANGLES ±2° FINISH - | | APVD RAY LONDON 30MAR2010 PRODUCT SPEC 108-2183 APPLICATION SPEC | NAME SIZE CAGE CODE DRAWING NO RESTRICTED TO A1 00779 C=1969352 - |
| MATERIAL - | | WEIGHT - | SCALE 3:1 SHEET 2 OF 2 REV A1 CUSTOMER DRAWING |