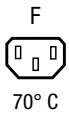
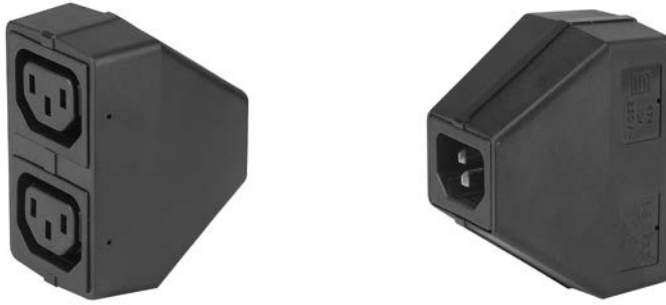


Distribution Unit with 1 IEC Appliance Inlet C14 and 2 Appliance Outlets F, Shuttered

**Description**

- Stand alone module
- 1 Function :
of 2 outlets , Pin temperature 70 °C , Protection class I , shuttered

Weblinks

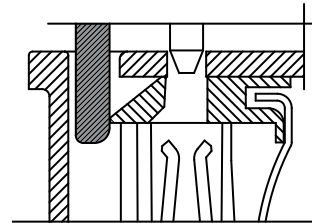
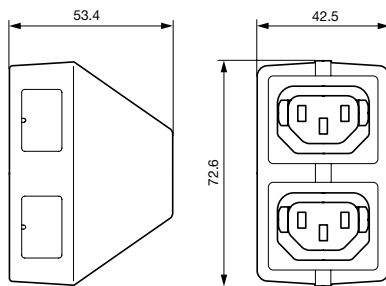
[pdf datasheet](#), [html-datasheet](#), [General Product Information](#), [RoHS](#), [CHINA-RoHS](#), [REACH](#), [Distributor-Stock-Check](#), [Accessories](#), [Detailed request for product](#)

Technical Data

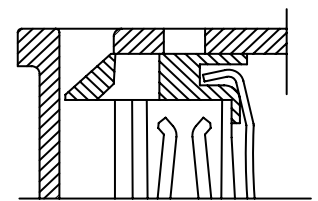
| | |
|---------------------------------|---|
| Ratings IEC | 10A / 250VAC; 50Hz |
| Ratings UL/CSA | 10A / 250VAC; 60Hz |
| Dielectric Strength | > 2.5kVAC between L-N > 2.5kVAC between L/N-PE (3sec/50Hz) |
| Allowable Operation Temperature | -25 °C to 70 °C |
| Insulation cover | Suitable for appliances with protection class I acc. to IEC 61140 |
| Material: Housing | Thermoplastic, black, UL 94V-0 |

| | |
|-------------------------|--|
| appliance inlet/-outlet | C14 acc. to IEC 60320-1, / F acc. to IEC 60320-1, UL 498 CSA C22.2 no. 42 (for cold conditions) pin-temperature 70 °C, 10A, Protection Class I |
|-------------------------|--|

Detailed information on product approvals, code requirements, usage instructions and detailed test conditions can be looked up in [General Product Information](#)

Dimensions

Shutter operation:
shutters opened by plug insertion



Shutter operation:
shutters closed when plug is removed

All Variants

| Type | Order Number |
|------|---------------------------|
| 4741 | 4741.0000 |

Most Popular.

Availability for all products can be searched real-time: <http://www.schurter.com/en/Stock-Check/Stock-Check-SCHURTER>

Packaging unit 50 Pcs

Mating Inlets/Plugs

Category / Description

[Plug Overview complete](#)



| | |
|---|------|
| IEC Plug E, Cord Connector (Rewireable), Straight, max. cable Diameter 8.5 mm | 4732 |
| IEC Plug E, Cord Connector (Rewireable), Straight, max. Cable Diameter 10 mm | 4735 |
| IEC Plug E, Cord Connector (Rewireable), Straight | 9009 |
| IEC Plug E, Cord Connector (Rewireable), Angled, max. Cable Diameter 8.5 mm | 4733 |
| IEC Plug E, Cord Connector (Rewireable), Angled, max. Cable Diameter 10 mm | 4736 |
| Plug further types to 4741 | ... |