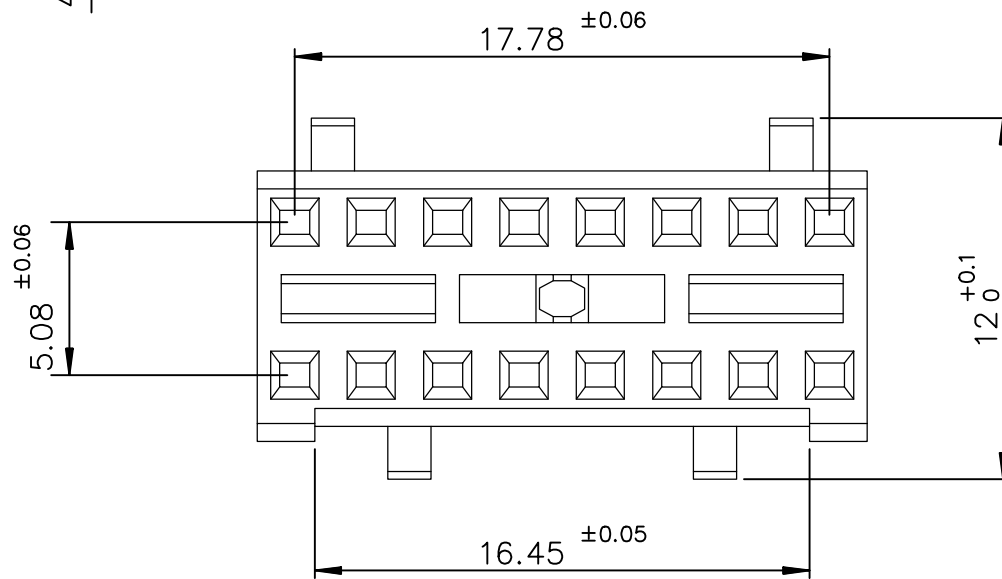
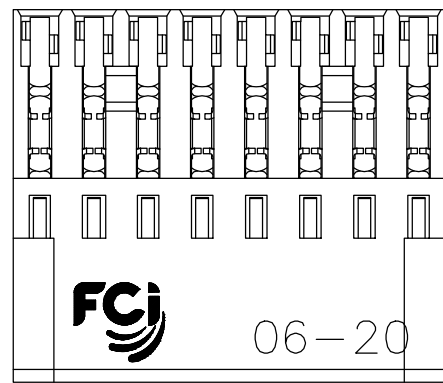
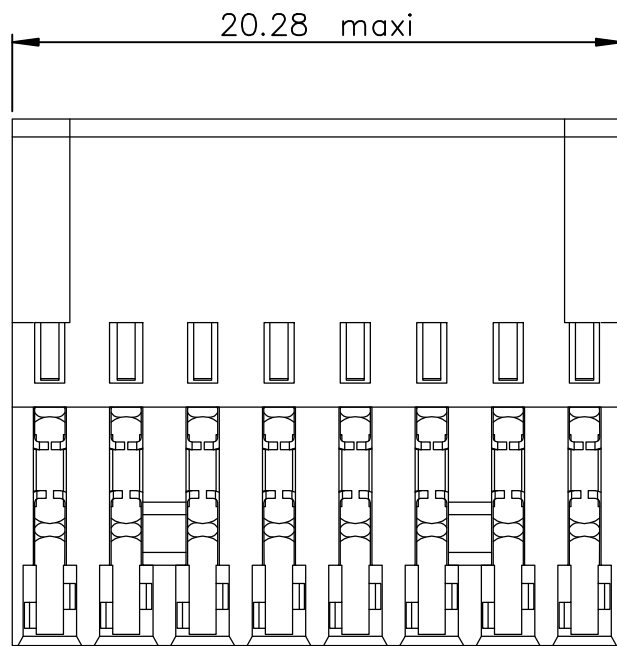
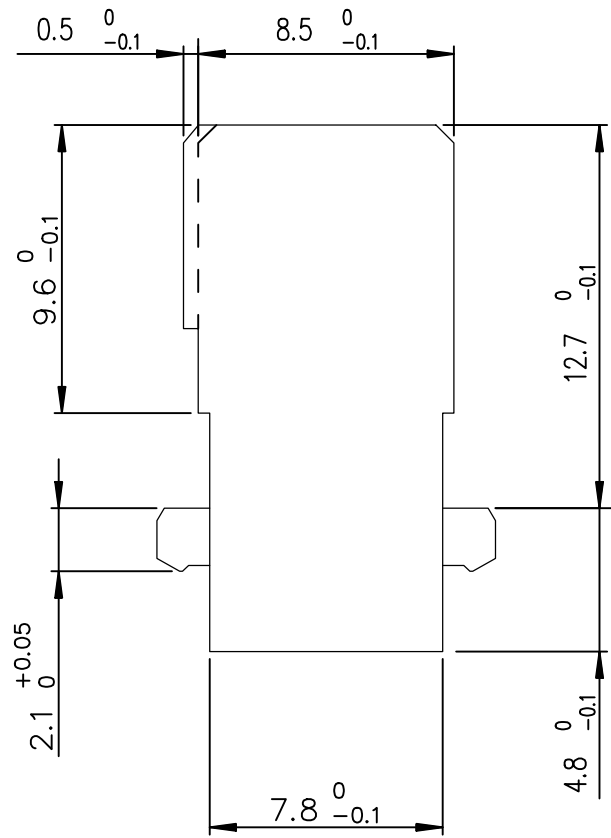


DIMENSIONS



ELECTRICAL CHARACTERISTICS

- current rating	1.5 A at 20° / 1 A at 70°
- I max	2A
- Contact resistance	≤ 20 mΩ
- Insulation resistance	≥ 5.10 ³ MΩ
- TEST VOLTAGE	
contact/contact	1000V eff (0.5 mA / 50 Hz)
contact/ground	1550V eff (0.5 mA / 50 Hz)

MECHANICAL CHARACTERISTICS

- Contact number	16
- Retention force	≥ 20N per contact
- Insertion force	≤ 15N
- Withdrawal force	≥ 2.5N
- Material insulator	Polyester thermoplastic
- Color	Grey RAL 7035
- Extinguishing	UL94V0
- Temperature range	- 55° C + 125° C
- Material contacts	Phosphor bronze Cu Sn 8
- Hardness	200 to 225 HV

TIN LEAD VERSION

- Finishing contact surface	Nickel : 2 μm min + PdNi Alloy : 0.68 μm min + Gold : 0.065 μm min
- Other area	Nickel

LEAD FREE VERSION

NOTE RoHS INFORMATION

- The "LF" products meet European Union Directives and other country regulations as described in GS-22-008.
- The housing will withstand exposure to 260°C peak temperature for 3.5 seconds in a wave solder application with a 1.6mm minimum thick circuit board. See application notes/procedures if they are available.
- Packaging spec: see GS-14-920

TIN LEAD PART NUMBER

PART NUMBER

864921640622001

LEAD FREE PART NUMBER

PART NUMBER

864921640622001LF

European Views

www.fciconnect.com		surface ISO 1302 ✓	tolerance std ISO 406 ISO 1101	projection mm
TOLERANCES UNLESS OTHERWISE SPECIFIED				
Dr	ROUILLARD	1991/04/09	ANGULAR	0.X ±0.1
Eng	TARON	1991/04/09	LINEAR	0.XX ±0.1
Chr	LEGARE	1991/04/09	0.XX' ±2'	0.XXX ±0.1
Appr	LEGARE	1991/04/09	Product family	DIN PHILIPS
FCI		title		CONNECTOR FEM, 2 ROW
		F-122		dwg no
		catalog no		C-8649-0007
		CUSTOMER		sheet 1 of 1

rev	ecn no	dr	date
B	-	JTA	1997/10/03
C	LS05-0056	LGO	2005/07/01
D	LS06-0075	LGO	2006/05/16
E	LS06-0095	LGO	2006/06/30
F	ELX-I-010140-1	MJA	2012/02/01
-	-	-	-
-	-	-	-