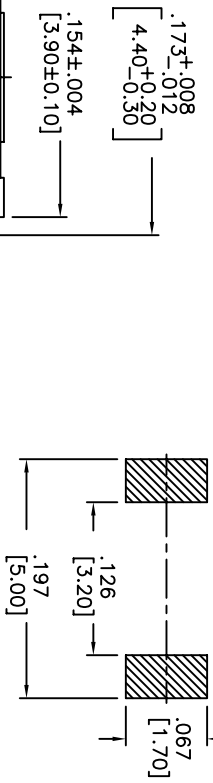
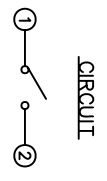
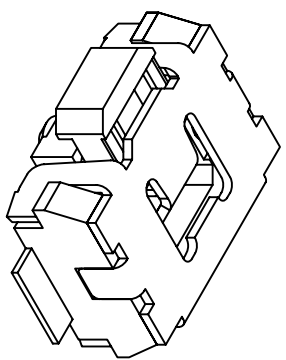
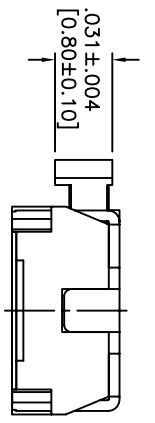
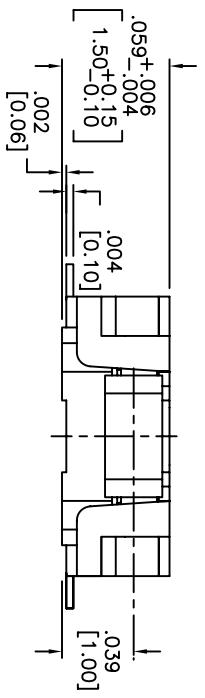
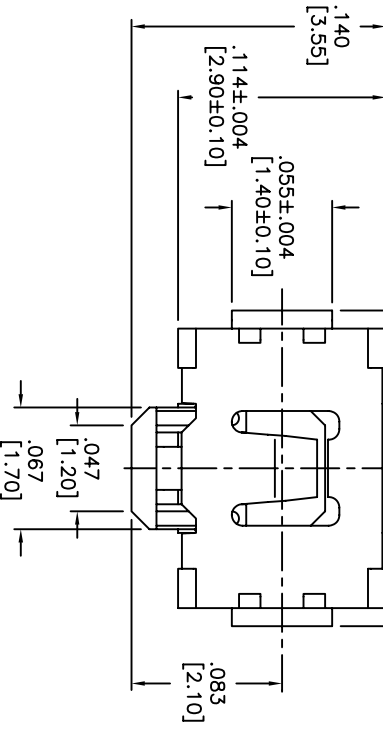


THIS DOCUMENT IS THE PROPERTY OF APDM COMPONENTS AND SHALL NOT BE COPIED, REPRODUCED, DISCLOSED OR USED AS THE BASIS FOR MANUFACTURING OR SALE WITHOUT PERMISSION OF A DULY AUTHORIZED REPRESENTATIVE OF APDM COMPONENTS INC.



HATCHED AREA SHOWS SOLDERING LAND
P.C.B. LAYOUT
UNLESS OTHERWISE SPECIFIED
ALL P.C. TOLERANCES ARE ±.002 [0.05]

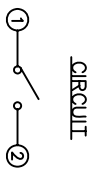
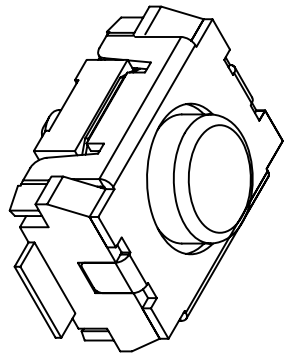
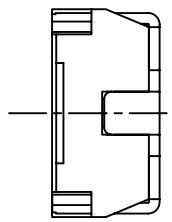
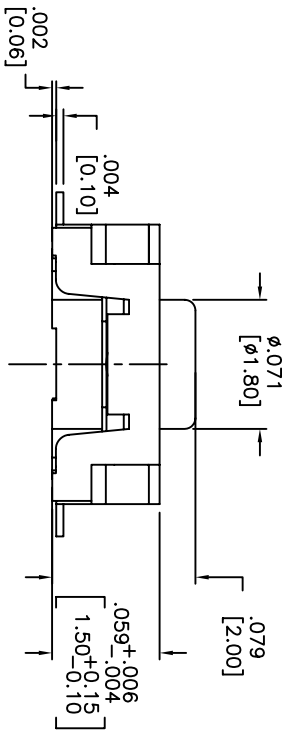
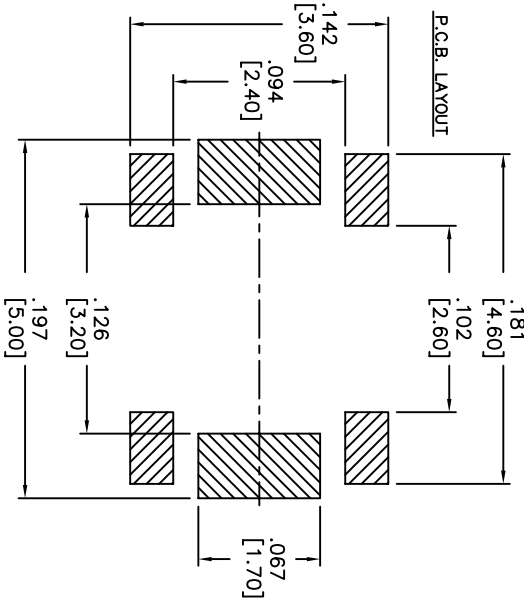
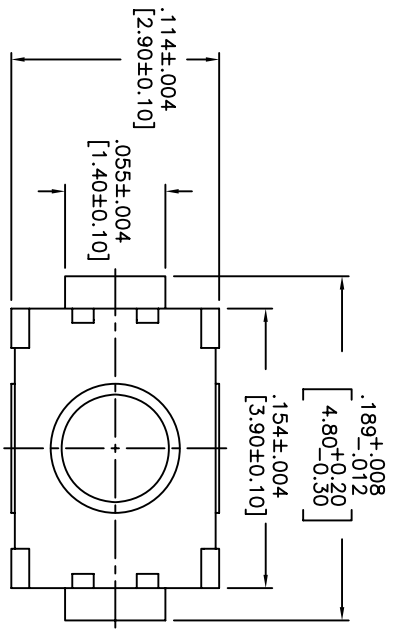


DATE	SYM	REVISION RECORD	DWN.	CK.
5/08	A	ECO# 778	CD	PD

DESCRIPTION: SIDE PUSH MECHANICAL CONTACT SWITCH.
SPECIFICATIONS:
OPERATION FORCE: 220± 65gf
STROKE: 0.2±0.08mm
OPERATION TEMP.: -25°C TO +70°C.
STORAGE TEMP.: -30°C TO +80°C.
ELECTRICAL LIFE: 100,000 CYCLES.
RATING: 50mA, 12VDC.
CONTACT RESISTANCE: 100mΩ MAX.
INSULATION RESISTANCE: 100MΩ MIN. AT 100VDC.
DIELECTRIC STRENGTH: 100VAC/1 MINUTE.
CONTACT ARRANGEMENT: 1 POLE 1 THROW.
VIBRATION TEST: PASSED METHOD 201A
MIL-STD-202F.
SHOCK TEST: 50G PER METHOD 213B CONDITION A OF MIL-STD-202F
MATERIALS:
COVER: STAINLESS STEEL
BASE: LCP HIGH-TEMP. THERMOPLASTIC.
COLOR, WHITE.
STEM: LCP HIGH-TEMP. THERMOPLASTIC.
COLOR, BLACK.
CONTACT DISK: STAINLESS STEEL WITH SILVER CLADDING
TERMINAL: BRASS WITH SILVER PLATING
PACKAGING: TAPE AND REEL (3,500 PIECES PER REEL)
ROHS COMPLIANT
LEAD FREE SOLDERING COMPATIBLE
HAND SOLDERING: 320°c MAX WITH 30 WATT IRON FOR 2 SECONDS
IR REFLOW: 260°C MAX
CUSTOMER PART NO.: 263262

APDM APDM COMPONENTS INC. 63 Neck Rd. Hopkinton, MA 01835 Phone: 508-372-3534 Fax: 508-372-3534		PPN: CJD BR: PJD
DESIGNS: CRITICAL DIMENSION TOLERANCES (UNLESS AS NOTED) .XX±.XX [0.5] .XXX±.XXX [0.20] .XXXX±.XXXX [0.02] ANGLE = 30.5°	TITLE TACT SWITCH	SHEET 1 OF 1 SIZE B SCALE 15:1 THIRD ANGLE PROJECTION
DO NOT SCALE DATE: 7/31/06 DRAWING NO. AMPTFVTR		REV A

THIS DOCUMENT IS THE PROPERTY OF APM COMPONENTS AND SHALL NOT BE COPIED, REPRODUCED, DISCLOSED OR USED AS THE BASIS FOR MANUFACTURING OR SALE WITHOUT PERMISSION OF A DULY AUTHORIZED REPRESENTATIVE OF APM COMPONENTS INC.

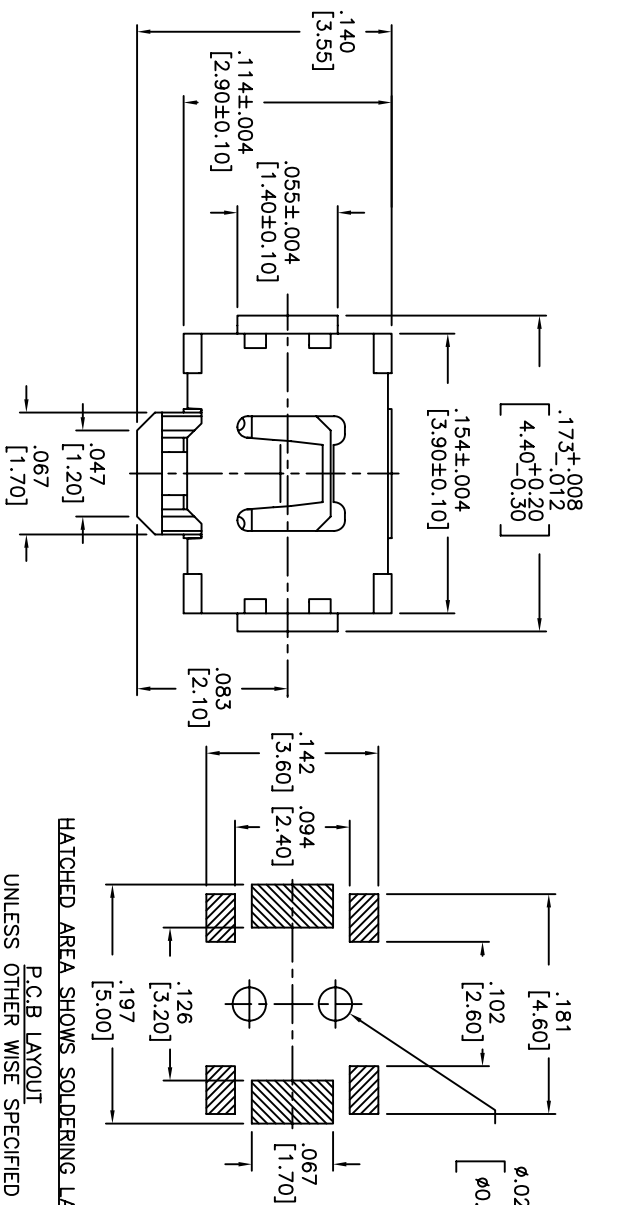


DATE	SYM	REVISION RECORD	DWN.	CK.
5/08	B	ECO# 778	CD	PD

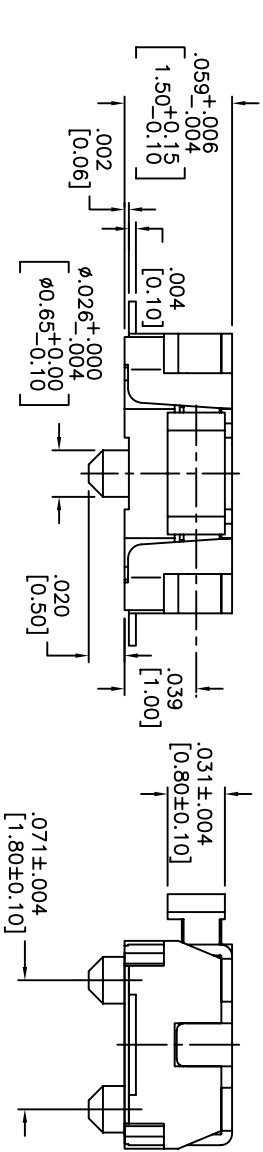
DESCRIPTION: VERTICAL PUSH MECHANICAL CONTACT SWITCH.
 SPECIFICATIONS:
 OPERATION FORCE: 160±50gf
 OPERATION TEMP.: -25°C TO +70°C.
 STORAGE TEMP.: -30°C TO +80°C.
 ELECTRICAL LIFE: 100,000 CYCLES.
 RATING: 50ma, 12VDC.
 VIBRATION RESISTANCE: PASSES METHOD 201A MIL-STD-202F
 SHOCK RESISTANCE: 50G PER METHOD 213B MIL-STD-202F
 CONTACT RESISTANCE: 100mΩ MAX.
 INSULATION RESISTANCE: 100MΩ MIN. AT 100VDC.
 DIELECTRIC STRENGTH: 100VAC/1 MINUTE.
 CONTACT ARRANGEMENT: 1 POLE 1 THROW.
 MATERIALS:
 COVER: STAINLESS STEEL
 BASE: LCP HIGH-TEMP. THERMOPLASTIC.
 COLOR, WHITE.
 STEM: LCP HIGH-TEMP. THERMOPLASTIC.
 COLOR, BLACK
 CONTACT DISK: STAINLESS STEEL WITH SILVER CLADDING
 TERMINAL: BRASS WITH SILVER PLATING
 TAPE: TEFLON.
 TAPE & REEL PACKAGING, 2,000 PER REEL
 SOLDERING:
 HAND SOLDERING: 30 WATT IRON AT 320°C FOR 2 SECONDS
 IR REFLOW: 240°C MAX
 ROHS COMPLIANT

D.A. INSPECT:		DESIGNS: CRITICAL DIMENSION:	DPN: CJD BR:
TOLERANCES (except as noted) .XX±.01(0.5) .XXX±.008(0.20) .XXX±.0008(0.02) ANGLE = 30.5°		63 Neck Rd. Haverhill, MA 01830 Telephone: 978-372-5554 Fax: 978-372-5554	OR: PJD BR:
DO NOT SCALE DATE: 2/4/08	SHEET: 1 OF 1 SIZE: B SCALE: 15:1	TITLE: VERTICAL PUSH TACT SWITCH	THIRD ANGLE PROJECTION
DRAWING NO: AMPPTGP2VTR	REV: B		

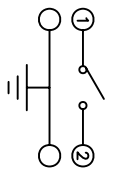
THIS DOCUMENT IS THE PROPERTY OF APEN COMPONENTS AND SHALL NOT BE COPIED, REPRODUCED, DISCLOSED OR USED AS THE BASIS FOR MANUFACTURING OR SALE WITHOUT PERMISSION OF A DULY AUTHORIZED REPRESENTATIVE OF APEN COMPONENTS INC.



HATCHED AREA SHOWS SOLDERING LAND.
P.C.B. LAYOUT
UNLESS OTHER WISE SPECIFIED
ALL P.C. TOLERANCES ARE ±.002 [0.05]



CIRCUIT



DATE	SYM	REVISION RECORD	DWN.	CK.
01/06	A	ECO # 526	CD	PD
5/08	B	ECO# 778	CD	PD

DESCRIPTION: SIDE PUSH MECHANICAL CONTACT SWITCH.
SPECIFICATIONS:
OPERATION FORCE: 220± 65gf
STROKE: 0.2[±]0.09mm
OPERATION TEMP.: -25°C TO +70°C.
STORAGE TEMP.: -30° TO +80°.
ELECTRICAL LIFE: 100,000 CYCLES.
RATING: 50mA, 12VDC.
CONTACT RESISTANCE: 100mΩ MAX.
INSULATION RESISTANCE: 100MΩ MIN. AT 100VDC.
DIELECTRIC STRENGTH: 100VAC/1 MINUTE.
CONTACT ARRANGEMENT: 1 POLE 1 THROW.
VIBRATION TEST: PASSED METHOD 201A MIL-STD-202F.
SHOCK TEST: 50G PER METHOD 213B CONDITION A OF MIL-STD-202F
MATERIALS:
COVER: STAINLESS STEEL
BASE: LCP HIGH-TEMP. THERMOPLASTIC.
COLOR: WHITE.
STEM: LCP HIGH-TEMP. THERMOPLASTIC.
COLOR: BLACK.
CONTACT DISK: STAINLESS STEEL WITH SILVER CLADDING
TERMINAL: BRASS WITH SILVER PLATING
PACKAGING: TAPE AND REEL (3,500 PEICES PER REEL)
ROHS COMPLIANT
HAND SOLDERING: 320°C MAX WITH 30 WATT IRON FOR 2 SECONDS
IR REFLOW: 240°C MAX

Q.A. INSPECT:

DESIGNER'S INITIAL	DATE	DRAWING NO.
TOLERANCES (UNLESS OTHERWISE SPECIFIED)	06/30/05	AMPTCFGVTR
XXX=±0.004 [0.20]		
XXX=±0.008 [0.02]		
ANGLE = 30.5°		

APEN 63 Neck Rd. Torrington, CT 06805
Tel: 860-772-5554 Fax: 860-772-5554

INCH	SHEET	SIZE	SCALE	THIRD ANGLE PROJECTION
1	OF 1	B	15:1	PD

TITLE: TACT SWITCH

DO NOT SCALE

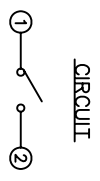
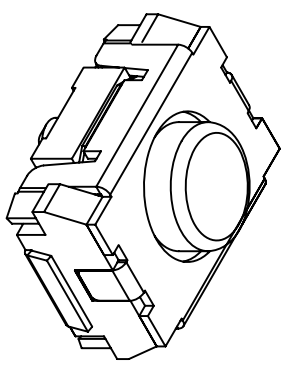
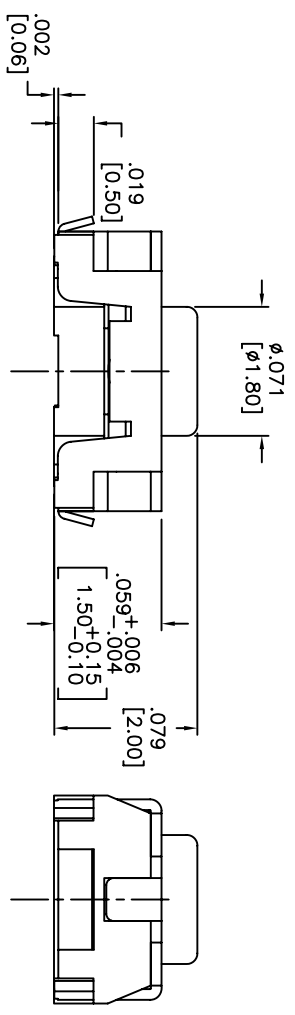
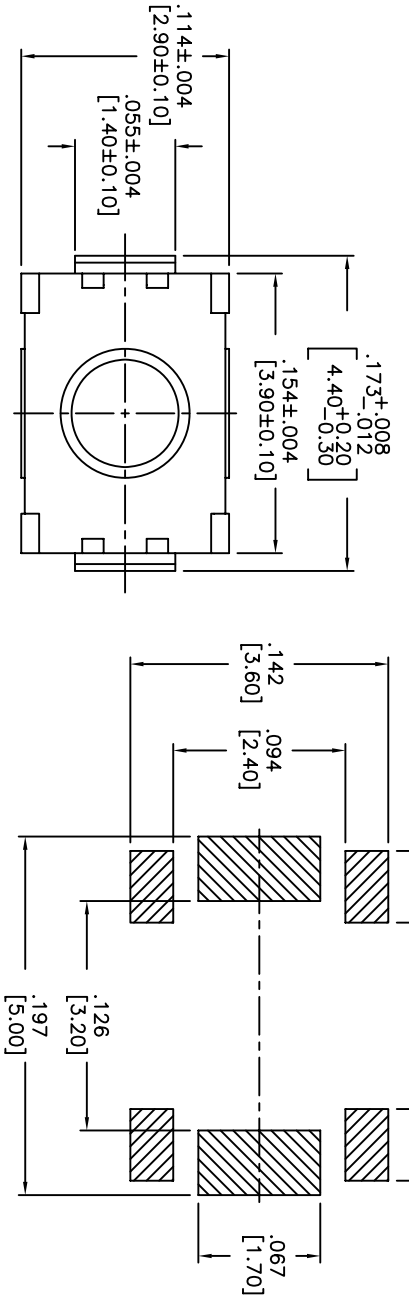
DATE: 06/30/05

DRAWING NO.: AMPTCFGVTR

REV: B

1 2 3 4 5 6 7 8

THIS DOCUMENT IS THE PROPERTY OF APDM COMPONENTS AND SHALL NOT BE COPIED, REPRODUCED, DISCLOSED OR SALE WITHOUT PERMISSION OF A DULY AUTHORIZED REPRESENTATIVE OF APDM COMPONENTS INC.



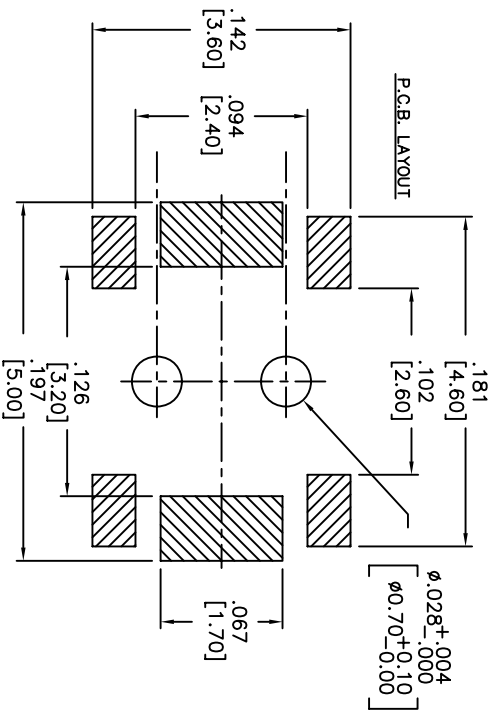
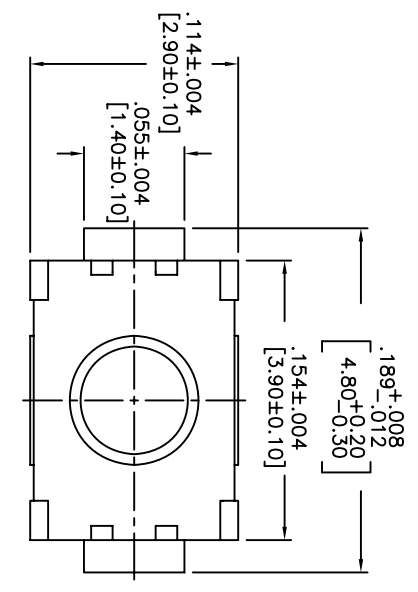
HATCHED AREA SHOWS SOLDERING LAND

DATE	SYM	REVISION RECORD	DWNL	CK
5/08	B	ECO# 778	CD	PD

DESCRIPTION: VERTICAL PUSH MECHANICAL CONTACT SWITCH.
 SPECIFICATIONS:
 OPERATION FORCE: 160± 50gf
 OPERATION TEMP.: -25°C TO +70°C.
 STORAGE TEMP.: -30°C TO +80°C.
 ELECTRICAL LIFE: 100,000 CYCLES.
 RATING: 50mA, 12VDC.
 VIBRATION RESISTANCE: PASSES METHOD 201A MIL-STD-202F
 SHOCK RESISTANCE: 50G PER METHOD 213B MIL-STD-202F
 CONTACT RESISTANCE: 100mΩ MAX.
 INSULATION RESISTANCE: 100MΩ MIN. AT 100VDC.
 DIELECTRIC STRENGTH: 100VAC/1 MINUTE.
 CONTACT ARRANGEMENT: 1 POLE 1 THROW.
 MATERIALS:
 COVER: STAINLESS STEEL
 BASE: LCP HIGH-TEMP. THERMOPLASTIC.
 COLOR, WHITE.
 STEM: LCP HIGH-TEMP. THERMOPLASTIC.
 COLOR, BLACK.
 CONTACT DISK: STAINLESS STEEL
 WITH SILVER CLADDING
 TERMINAL: BRASS WITH SILVER PLATING
 TAPE: TEFLON.
 TAPE & REEL PACKAGING, 2,000 PER REEL
 SOLDERING:
 HAND SOLDERING: 30 WATT IRON AT 320°C FOR 2 SECONDS
 IR REFLOW: 240°C MAX
 ROHS COMPLIANT

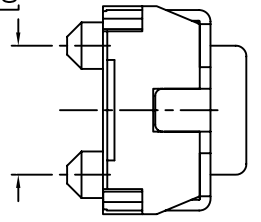
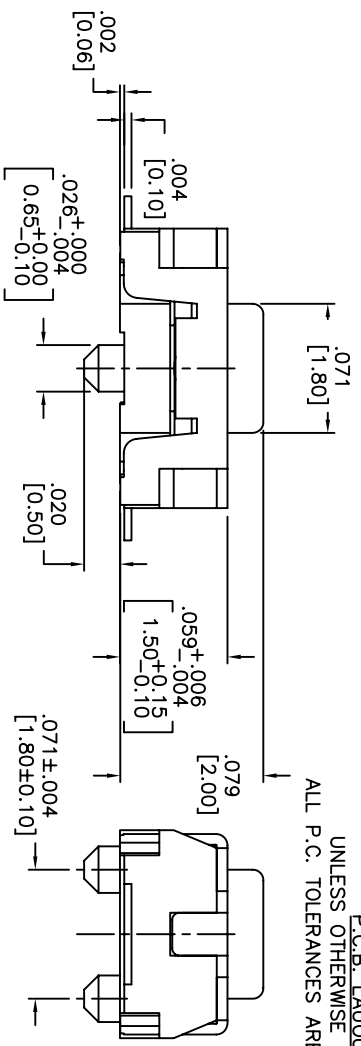
Q.A. INSPECT: 		DESIGNER'S CRITICAL DIMENSION		PERN. CJD	
TOLERANCES (UNLESS OTHERWISE SPECIFIED) .XX = ±0.05 .XXX = ±0.008 (0.20) .XXXX = ±0.0008 (0.02) ANGLE = 40.5°		 APDM 63 Nork Rd. Hawthorn Hill, VA 01835 434-372-3534 FAX: 434-372-3534		DR. BR. BR. PJD	
DO NOT SCALE DRAWING		DATE: 2/4/08		DRAWING NO.: AMPPTLGP2VTR	
TITLE: VERTICAL PUSH TACT SWITCH		SHEET: 1 OF 1		SCALE: 15:1	
THIRD ANGLE PROJECTION				REV: B	

THIS DOCUMENT IS THE PROPERTY OF APDM COMPONENTS AND SHALL NOT BE COPIED, REPRODUCED, DISCLOSED OR USED AS THE BASIS FOR MANUFACTURING OR SALE WITHOUT PERMISSION OF A DULY AUTHORIZED REPRESENTATIVE OF APDM COMPONENTS INC.

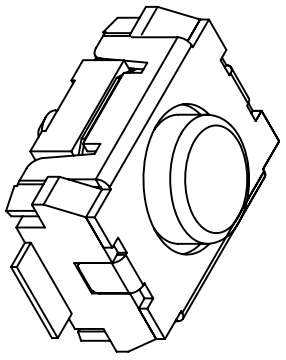


HATCHED AREA SHOWS SOLDERING LAND

P.C.B. LAYOUT
UNLESS OTHERWISE SPECIFIED
ALL P.C. TOLERANCES ARE ±.002 [0.50]



CIRCUIT



DATE	SYM	REVISION RECORD	DWN.	CK.
5/08	B	ECO# 778	CD	PD

DESCRIPTION: VERTICAL PUSH MECHANICAL CONTACT SWITCH.

SPECIFICATIONS:

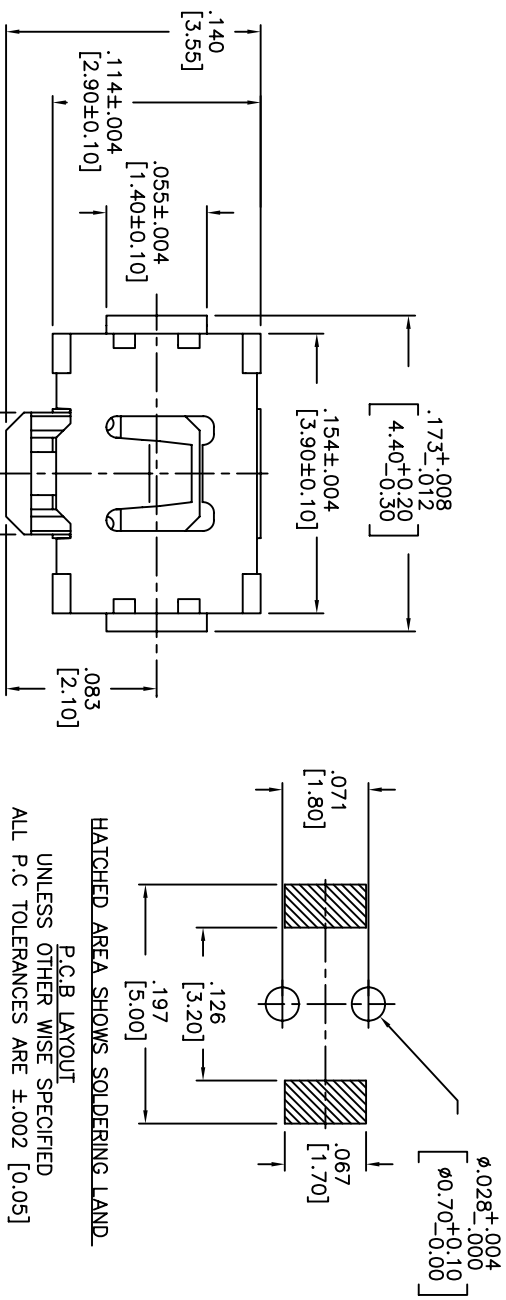
OPERATION FORCE: 160± 50gf
 OPERATION TEMP.: -25°C TO +70°C.
 STORAGE TEMP.: -30°C TO +80°C.
 ELECTRICAL LIFE: 200,000 CYCLES.
 RATING: 50ma, 12VDC.
 VIBRATION RESISTANCE: PASSES METHOD 201A
 MIL-STD-202F
 SHOCK RESISTANCE: 50G PER METHOD 213B
 MIL-STD-202F
 CONTACT RESISTANCE: 100mΩ MAX.
 INSULATION RESISTANCE: 100MΩ MIN. AT 100VDC.
 DIELECTRIC STRENGTH: 100VAC/1 MINUTE.
 CONTACT ARRANGEMENT: 1 POLE 1 THROW.
 TRAVEL: .005 ±.002 [0.13 ±0.05]

MATERIALS:

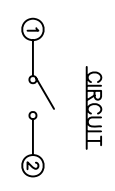
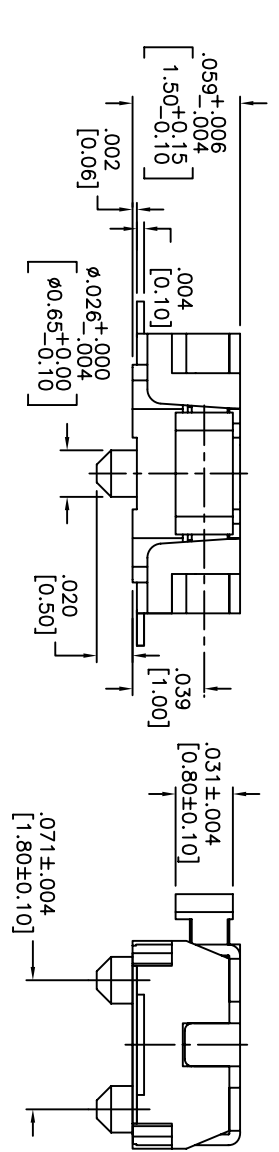
COVER: STAINLESS STEEL
 BASE: LCP HIGH-TEMP. THERMOPLASTIC.
 COLOR, WHITE.
 STEM: LCP HIGH-TEMP. THERMOPLASTIC.
 COLOR, BLACK.
 CONTACT DISK: STAINLESS STEEL WITH SILVER CLADDING
 TERMINAL: BRASS WITH SILVER PLATING
 TAPE: TEFLON.
 TAPE & REEL PACKAGING: 2,000 PER REEL
 SOLDERING:
 HAND SOLDERING: 30 WATT IRON AT 320°C FOR 2 SECONDS
 IR REFLOW: 240°C MAX
 ROHS COMPLIANT

Q.A. INSPECT:	DESIGNER'S INITIAL:	APDM	63 Neck Rd. Haverhill, MA 01830 Phone: 978-372-5554 Fax: 978-372-5554	DRN. CJD	
TOLERANCES (UNLESS OTHERWISE SPECIFIED)	INCH	SHEET	SIZE	SCALE	THIRD ANGLE PROJECTION
.XX±.XX[0.5]	1	OF 1	B	15:1	⊕
.XXX±.XX[0.20]	TITLE TACT SWITCH				
.XXXX±.XX[0.02]	DATE 6/30/05				
ANGLE = 30.5°	DRAWING NO. AMPTCFGP2VTR				
DO NOT SCALE	REV B				

THIS DOCUMENT IS THE PROPERTY OF APEM COMPONENTS AND SHALL NOT BE COPIED, REPRODUCED, DISCLOSED OR SALE WITHOUT PERMISSION OF A DULY AUTHORIZED REPRESENTATIVE OF APEM COMPONENTS INC.



HATCHED AREA SHOWS SOLDERING LAND
 P.C.B LAYOUT
 UNLESS OTHER WISE SPECIFIED
 ALL P.C TOLERANCES ARE ±.002 [0.05]



DESCRIPTION: SIDE PUSH MECHANICAL CONTACT SWITCH.
 SPECIFICATIONS:
 OPERATION FORCE: 220± 65gf
 STROKE: 0.2±0.10mm
 OPERATION TEMP.: -25°C TO +70°C.
 STORAGE TEMP.: -30°C TO +80°C.
 ELECTRICAL LIFE: 100,000 CYCLES.
 RATING: 50mA, 12VDC.
 CONTACT RESISTANCE: 100mΩ MAX.
 INSULATION RESISTANCE: 100MΩ MIN. AT 100VDC.
 DIELECTRIC STRENGTH: 100VAC/1 MINUTE.
 CONTACT ARRANGEMENT: 1 POLE 1 THROW.
 VIBRATION TEST: PASSED METHOD 201A
 MIL-STD-202F.
 SHOCK TEST: 50G PER METHOD 213B CONDITION A OF MIL-STD-202F
 MATERIALS:
 COVER: STAINLESS STEEL
 BASE: LCP HIGH-TEMP. THERMOPLASTIC.
 COLOR: WHITE.
 STEM: LCP HIGH-TEMP. THERMOPLASTIC.
 COLOR: BLACK.
 CONTACT DISK: STAINLESS STEEL
 WITH SILVER CLADDING
 TERMINAL: BRASS WITH SILVER PLATING
 PACKAGING: TAPE AND REEL
 (3,500 PEICES PER REEL)
 ROHS COMPLIANT
 LEAD FREE SOLDERING COMPATIBLE
 HAND SOLDERING: 320°C MAX WITH 30 WATT IRON
 FOR 2 SECONDS
 IR REFLOW: 260°C MAX

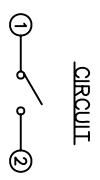
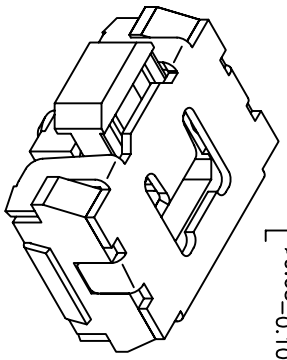
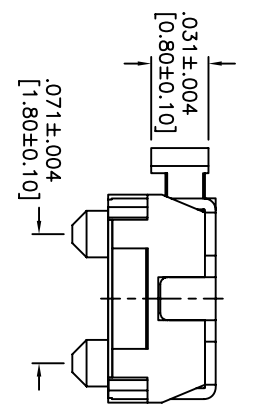
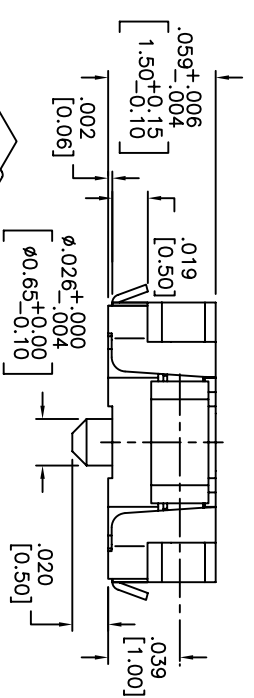
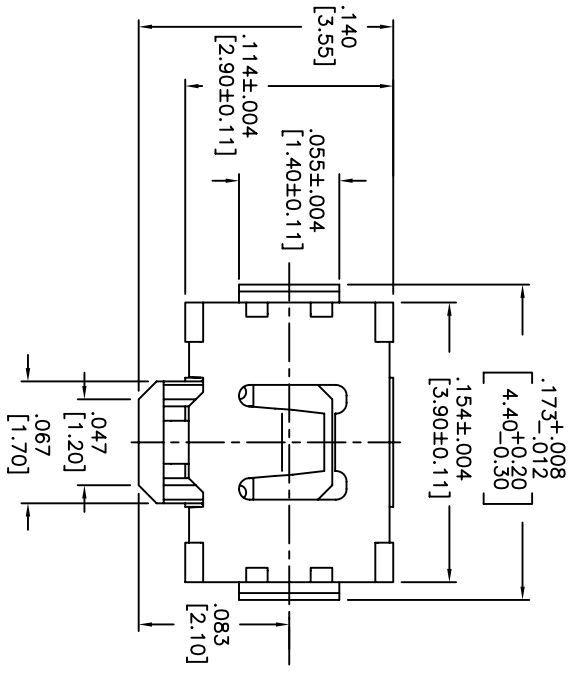
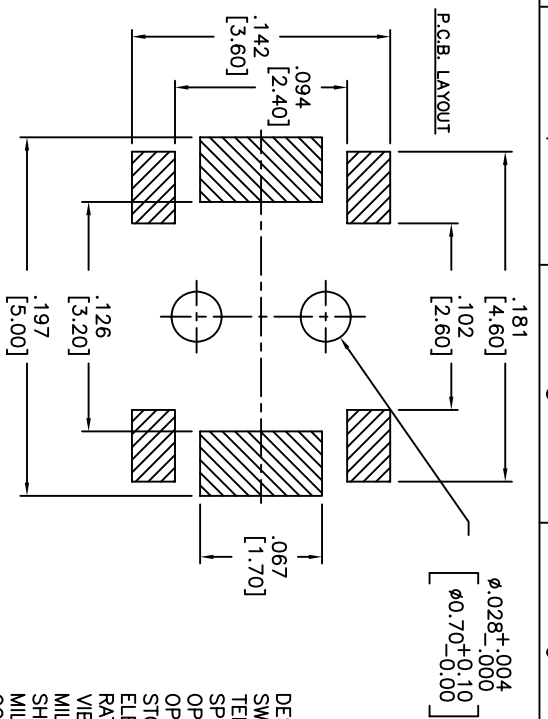
DATE	SYM	REVISION RECORD	DWN.	CK.
5/08	B	ECO# 778	CD	PD

Q.A. INSPECT 		DESIGNER'S INITIAL DIMENSION		DRN. CJD BR.	
TOLERANCES (UNLESS AS NOTED) .XX±.XX[0.5] .XXX±.XXX[0.20] .XXXX±.XXXX[0.02] ANGLE = 30.5°		APEM 63 Neck Rd. Hawthorne, NJ 07835 Tel: 973-772-5554 Fax: 973-772-5554		CHK. PJD DR.	
TITLE TACT SWITCH		SHEET 1 OF 1 SIZE B SCALE 15:1		THIRD ANGLE PROJECTION 	
DATE 5/2/06 DO NOT SCALE DRAWING NO. AMPTCFVTR				REV B	

1 2 3 4 5 6 7 8

THIS DOCUMENT IS THE PROPERTY OF APDM COMPONENTS AND SHALL NOT BE COPIED, REPRODUCED, DISCLOSED OR USED AS THE BASIS FOR MANUFACTURING OR SALE WITHOUT PERMISSION OF A DULY AUTHORIZED REPRESENTATIVE OF APDM COMPONENTS INC.

DATE	SYM	REVISION RECORD	DWNL	CK
1/06	B	ECO# 526	CD	PD
5/08	C	ECO# 778	CD	PD



DESCRIPTION: SIDE PUSH MECHANICAL CONTACT SWITCH, WITH BENDING AND GROUNDING TERMINALS.

SPECIFICATIONS:

OPERATION FORCE: 220± 65gf

OPERATION TEMP.: -25°C TO +70°C.

STORAGE TEMP.: -30°C TO +80°C.

ELECTRICAL LIFE: 100,000 CYCLES.

RATING: 50mA, 12VDC.

VIBRATION RESISTANCE: PASSES METHOD 201A MIL-STD-202F

SHOCK RESISTANCE: 50G PER METHOD 213B MIL-STD-202F

CONTACT RESISTANCE: 100MΩ MAX.

INSULATION RESISTANCE: 100MΩ MIN. AT 100VDC.

DIELECTRIC STRENGTH: 100VAC/1 MINUTE.

CONTACT ARRANGEMENT: 1 POLE 1 THROW.

STROKE: .008 ±.002 [0.2 ±0.05]

MATERIALS:

COVER: STAINLESS STEEL

BASE: LCP HIGH-TEMP. THERMOPLASTIC. COLOR: WHITE.

STEM: LCP HIGH-TEMP. THERMOPLASTIC. COLOR: BLACK.

CONTACT DISK: STAINLESS STEEL WITH SILVER CLADDING

TERMINAL: BRASS WITH SILVER PLATING

TAPE: TEFLON.

TAPE & REEL PACKAGING, 3500 PER REEL

HAND SOLDERING: 30 WATT IRON AT 320°C FOR 2 SECONDS

IR REFLOW: 240°C MAX

ROHS COMPLIANT

DESIGNER'S INITIAL	DATE	NO. OF SHEETS	SCALE	THIRD ANGLE PROJECTION
APDM	06/30/05	1 OF 1	15:1	AMPTCLGVTR
DESIGNER'S NAME	DRAWING NO.	SHEET	SIZE	REV
J. K. [Signature]	AMPTCLGVTR	B	15:1	C
TITLE	DATE	NO. OF SHEETS	SCALE	THIRD ANGLE PROJECTION
TACT SWITCH	06/30/05	1 OF 1	15:1	AMPTCLGVTR

9A. INSPECT

DESIGNER'S INITIAL

TOLERANCES (UNLESS OTHERWISE SPECIFIED)

.XX±.YY(Z) [0.5]

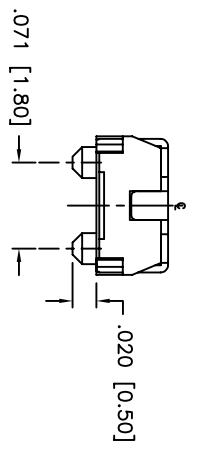
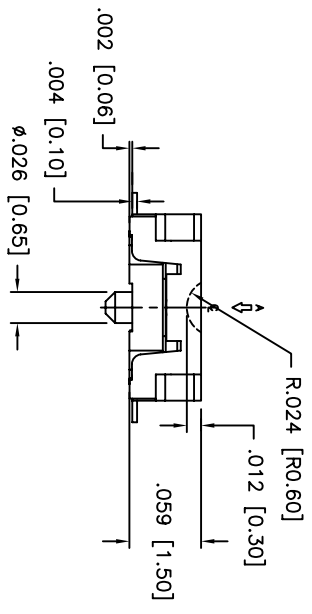
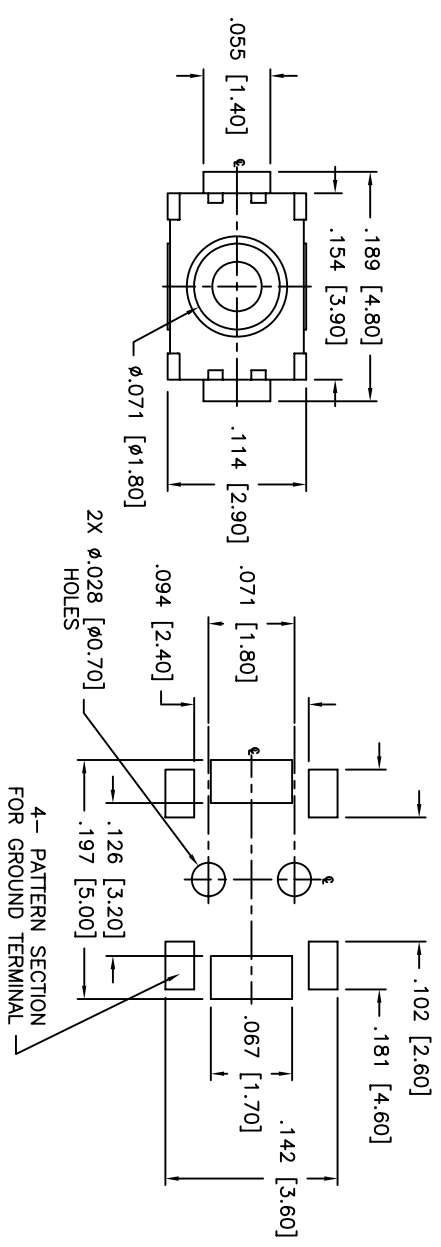
.XXX±.YYY [0.20]

.XXXX±.YYYY [0.02]

ANGLE = 30.5°

1 2 3 4 5 6 7 8

THIS DOCUMENT IS THE PROPERTY OF APDM COMPONENTS AND SHALL NOT BE COPIED, REPRODUCED, DISCLOSED OR USED AS THE BASIS FOR MANUFACTURING OR SALE WITHOUT PERMISSION OF A DULY AUTHORIZED REPRESENTATIVE OF APDM COMPONENTS INC.



UNLESS OTHERWISE SPECIFIED
P.C. TOLERANCES ARE $\pm .002$ [0.05]

P.C. LAYOUT

4- PATTERN SECTION
FOR GROUND TERMINAL

DATE	SYM	REVISION RECORD	DWN.	CK.
1/06	A	ECO # 526	CD	PD
5/08	B	ECO# 778	CD	PD

DESCRIPTION: SPST, NORMALLY OPEN, MOMENTARY,
SURFACE MOUNT TACT SWITCH WITH LOCATING
PINS

SPECIFICATIONS:

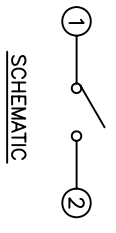
CONTACT RATING: 50mA @ 12VDC
INITIAL CONTACT RESISTANCE: 100MOHMS MAX.
INSULATION RESISTANCE: 100MOHMS MIN. @ 500VDC
DIELECTRIC STRENGTH: 100VAC FOR 1 MINUTE
ELECTRICAL LIFE: 200,000 CYCLES MIN.
OPERATING TEMPERATURE RANGE: -25°C to +70°C
STOP STRENGTH: MAX 3kgf VERTICAL STATIC LOAD
CONT. FOR 15 SEC.

ACTUATION FORCE: 160± 50gf
STORAGE TEMPERATURE RANGE: -30°C TO +80°C
SHOCK RESISTANCE: 50G PER METHOD 213B, MIL-STD-202F
VIBRATION RESISTANCE: PASSES METHOD 201A, MIL-STD-202F

SOLDERING:
IR REFLOW: 240°C MAX.
HAND SOLDERING: 350°C MAX. FOR 3 SECONDS MAX.
(30 WATT IRON MAX.)

MATERIALS:
BASE: LCP HIGH-TEMP THERMOPLASTIC UL94V-0
ACTUATOR: LCP HIGH-TEMP THERMOPLASTIC UL94V-0
COVER: STAINLESS STEEL
TERMINALS: SILVER PLATED BRASS
SHORTING CONTACT: STAINLESS STEEL WITH SILVER CLADDING
TAPE: TEFLON
ROHS COMPLIANT

NOTE:
1. AFTER SOLDERING, RETURN SWITCHES TO NORMAL
TEMPERATURE BEFORE WASHING.

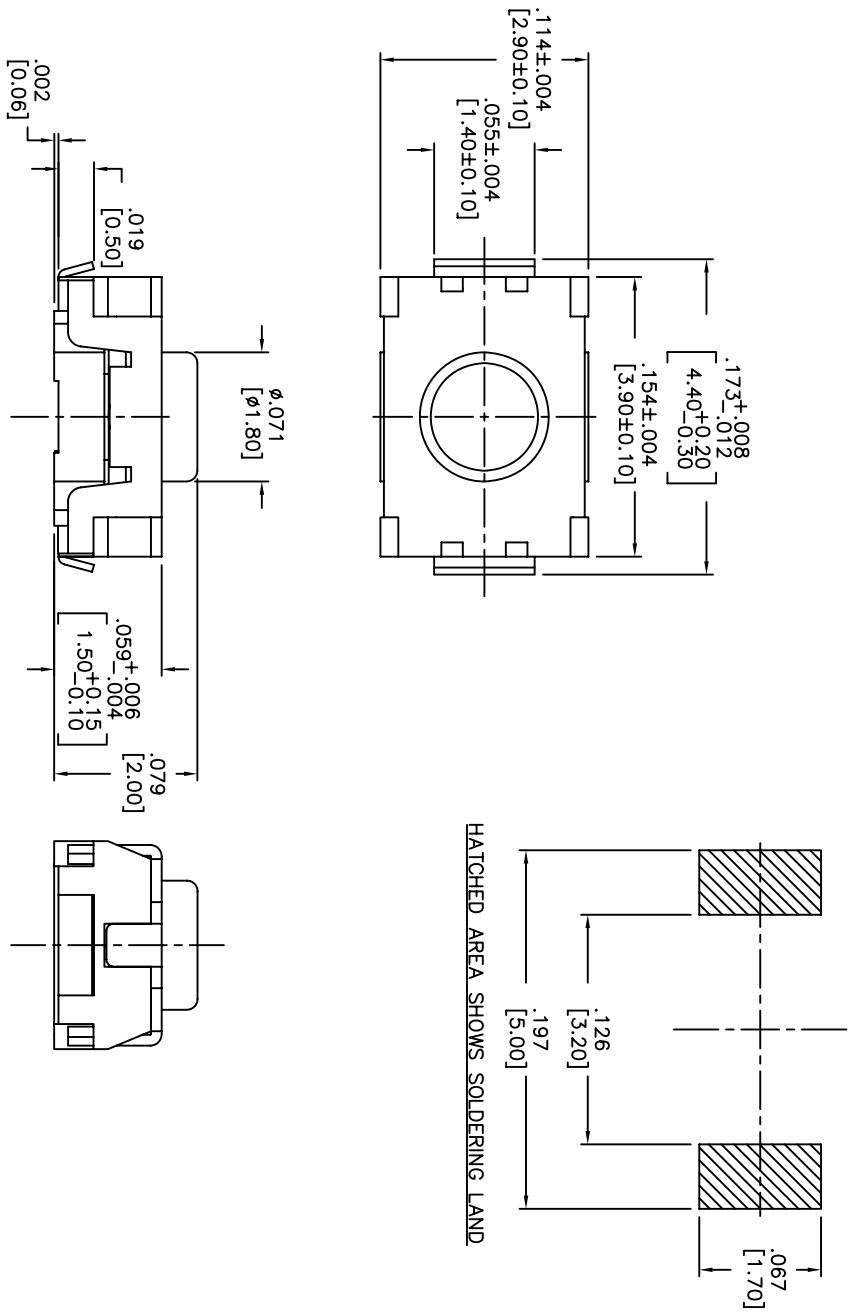


SCHEMATIC

Q.A. INSECT: 		DESIGNER'S INITIAL DIMENSION		APDM APDM COMPONENTS INC. 63 NORTON RD. HENDERILL, MA 01835 TEL: 978-375-3534 FAX: 978-375-3534		PRN. CJD BR: PJD CR: PJD	
TOLERANCES (UNLESS AS NOTED) .XX=±.02[0.5] .XXX=±.008[0.20] .XXXX=±.0008[0.02] ANGLE = 30.5°		TITLE TACT SWITCH WITH LOCATING PINS		SHEET 1 OF 1		SIZE B	
DO NOT SCALE DRAWING NO. AMPTCFGP1VTR		DATE 07/20/05		SCALE 10:1		THIRD ANGLE PROJECTION 	
				REV B			

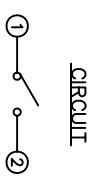
THIS DOCUMENT IS THE PROPERTY OF APDM COMPONENTS AND SHALL NOT BE COPIED, REPRODUCED, DISCLOSED OR USED AS THE BASIS FOR MANUFACTURING OR SALE WITHOUT PERMISSION OF A DULY AUTHORIZED REPRESENTATIVE OF APDM COMPONENTS INC.

P.C.B. LAYOUT



DATE	SYM	REVISION RECORD	DWN.	CK.
1/06	A	ECO# 526	CD	PD
5/08	B	ECO# 778	CD	PD

DESCRIPTION: VERTICAL PUSH MECHANICAL CONTACT SWITCH.
 SPECIFICATIONS:
 OPERATION FORCE: 220± 65gf
 OPERATION TEMP.: -25°C TO +70°C.
 STORAGE TEMP.: -30°C TO +80°C.
 ELECTRICAL LIFE: 200,000 CYCLES.
 RATING: 50mA, 12VDC.
 VIBRATION RESISTANCE: PASSES METHOD 201A
 MIL-STD-202F
 SHOCK RESISTANCE: 50G PER METHOD 213B
 MIL-STD-202F
 CONTACT RESISTANCE: 100mΩ MAX.
 INSULATION RESISTANCE: 100MΩ MIN. AT 100VDC.
 DIELECTRIC STRENGTH: 100VAC/1 MINUTE.
 CONTACT ARRANGEMENT: 1 POLE 1 THROW.
 MATERIALS:
 COVER: STAINLESS STEEL
 BASE: LCP HIGH-TEMP. THERMOPLASTIC.
 COLOR, WHITE.
 STEM: LCP HIGH-TEMP. THERMOPLASTIC.
 COLOR, BLACK.
 CONTACT DISK: STAINLESS STEEL WITH SILVER CLADDING
 TERMINAL: BRASS WITH SILVER PLATING
 TAPE & REEL PACKAGING, 2,000 PER REEL
 SOLDERING:
 HAND SOLDERING: 30 WATT IRON AT 320°C FOR 2 SECONDS
 IR REFLOW: 240°C MAX
 ROHS COMPLIANT
 LEAD FREE PROCESS COMPATIBLE

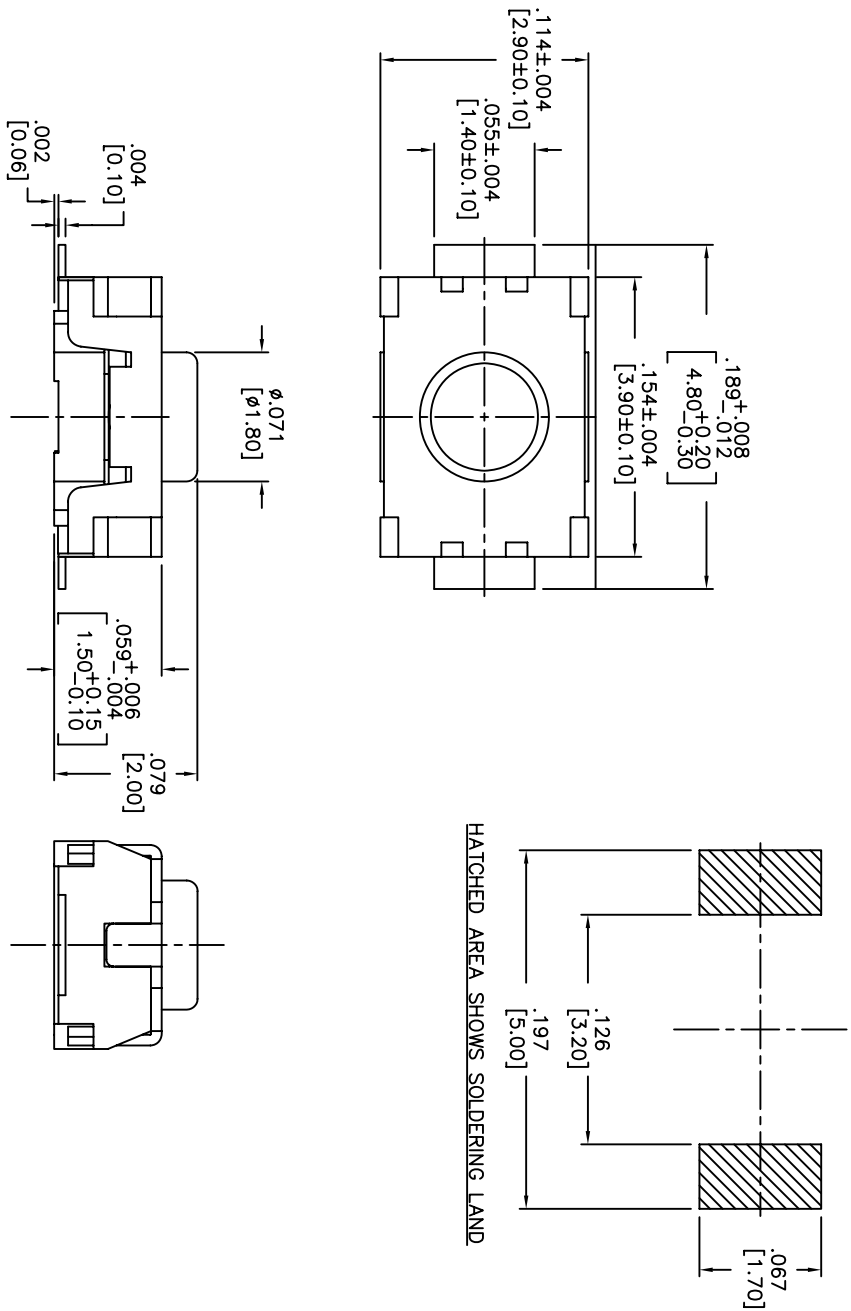


Q.A. INSPECT: 		DESIGNER'S CRITICAL DIMENSION 		PERN. CJD BR.
TOLERANCES (UNLESS OTHERWISE SPECIFIED) .XX±.XX[0.05] .XXX±.XXX[0.20] .XXXX±.XXXX[0.002] ANGLE = 30.5°		 63 Neck Rd. Hendersonville, NC 27535 Phone: 704-372-3554 Fax: 704-372-3554		OR. PJD THIRD ANGLE PROJECTION
TITLE TACT SWITCH	SHEET 1 OF 1	SIZE B	SCALE 15:1	REV B
DATE 01/23/06	DRAWING NO. AMPTLP2VTR		DO NOT SCALE DIMENSIONS	

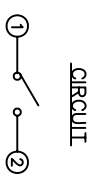
1 2 3 4 5 6 7 8

THIS DOCUMENT IS THE PROPERTY OF APDM COMPONENTS AND SHALL NOT BE COPIED, REPRODUCED, DISCLOSED OR SALE WITHOUT PERMISSION OF A DULY AUTHORIZED REPRESENTATIVE OF APDM COMPONENTS INC.

P.C.B. LAYOUT



HATCHED AREA SHOWS SOLDERING LAND



CIRCUIT

DESCRIPTION: VERTICAL PUSH MECHANICAL CONTACT SWITCH.
 SPECIFICATIONS:
 OPERATION FORCE: 160± 50gf
 OPERATION TEMP.: -25°C TO +70°C.
 STORAGE TEMP.: -30°C TO +80°C.
 ELECTRICAL LIFE: 200,000 CYCLES.
 RATING: 50mA, 12VDC.
 VIBRATION RESISTANCE: PASSES METHOD 201A
 MIL-STD-202F
 SHOCK RESISTANCE: 50G PER METHOD 213B
 MIL-STD-202F
 CONTACT RESISTANCE: 100mΩ MAX.
 INSULATION RESISTANCE: 100MΩ MIN. AT 100VDC.
 DIELECTRIC STRENGTH: 100VAC/1 MINUTE.
 CONTACT ARRANGEMENT: 1 POLE 1 THROW.
 MATERIALS:
 COVER: STAINLESS STEEL
 BASE: LCP HIGH-TEMP. THERMOPLASTIC.
 COLOR, WHITE.
 STEM: LCP HIGH-TEMP. THERMOPLASTIC.
 COLOR, BLACK.
 CONTACT DISK: STAINLESS STEEL WITH SILVER CLADDING
 TERMINAL: BRASS WITH SILVER PLATING
 TAPE: TEFLON.
 TAPE & REEL PACKAGING, 2,000 PER REEL
 SOLDERING:
 HAND SOLDERING: 30 WATT IRON AT 320°C FOR 2 SECONDS
 IR REFLOW: 260°C MAX
 RoHS COMPLIANT
 LEAD FREE PROCESS COMPATIBLE

DATE	SYM	REVISION RECORD	DWN.	CK.
5/08	B	ECO# 778	CD	PD

Q.A. INSPECT:		DESIGNER'S INITIAL:		DWN. CJD	
DIMENSION		APDM		BR: PJD	
TOLERANCES (UNLESS OTHERWISE SPECIFIED)		63 NACK RD. FORT WORTH, TX 76103		THIRD ANGLE PROJECTION	
.XX = ±.02 [0.5]		FORM 372-3524		ANGLE	
.XXX = ±.008 [0.20]				15:1	
.XXXX = ±.0008 [0.02]				DRAWING NO. AMPTFP2VTR	
ANGLE = 30.5°				REV B	
DO NOT SCALE		DATE 01/23/06			

1 2 3 4 5 6 7 8